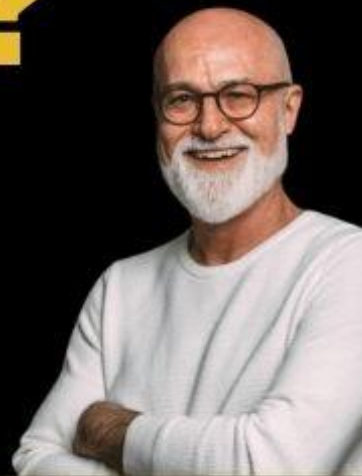




# Are You a **FEELER?**

How Sensitivity  
**HELPS YOU DISCERN**  
God's Voice



Free Masterclass with Dr. James W. Goll

# I WAS BUSY, NOW I'M NOT™

*Changing the Way You Think About*  
**TIME**

JOSEPH PECK, M.D.  
*The Time Doctor™*



## Joseph Peck, M.D.

*The Time Doctor*



- My passion is creating a movement empowering dreams of millions of people globally through coaching, journaling, and life-changing webinars.
- My gift is connecting people, ideas, and resources in Christ for creative miracles.

# Expectations

- Today, your life will change forever
- The LORD is releasing the sights and sounds of Heaven
- Holy Spirit is expanding your mind, heart, and spirit to new dimensions
- Struck by spiritual lightning
- Explosions of holy knowing



# Housekeeping



**You may download the study guide** in the chat. After today's session, you will also receive a follow up email with a link to download the study guide.



**Everyone who participates in the LIVE broadcast** will receive a follow up email with a link to download the **PowerPoint**.



**Speaker View** If you'd like to see the speaker larger, please click **View** in the upper right-hand corner, then click "**Side by Side: Speaker**".



**Everyone who completes the post-webinar SURVEY** when they exit the broadcast will be sent a link to download the **Transcript**.



**Follow up emails** will be sent after the broadcast with links to the replay page, testimonies, & more, so look out for those emails.



**For questions** related to the webinar, please email **[support@empower2000.com](mailto:support@empower2000.com)**.



## Dr. James W. Goll

[GodEncounters.com](http://GodEncounters.com)

**James W. Goll** is the founder of God Encounters Ministries and GOLL Ideation LLC. He has traveled the world sharing the love of Jesus, imparting the power of intercession, prophetic ministry and life in the Spirit. He has recorded numerous classes with corresponding study guides and is the author of numerous books, including *The Seer*, *The Lost Art of Intercession*, *The Lifestyle of a Prophet*, *Praying with God's Heart* and *The Discerner*. James is the father of four wonderful adult married children with a growing number of grandchildren, and continues to make his home in Franklin, TN.

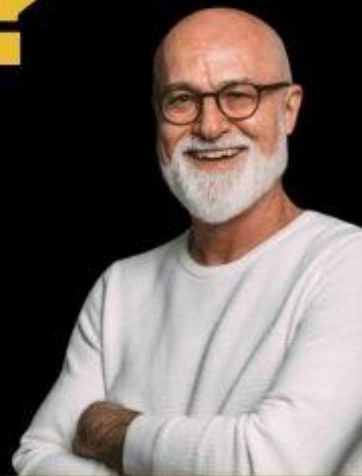
Prayer





# Are You a **FEELER?**

How Sensitivity  
**HELPS YOU DISCERN**  
God's Voice



Free Masterclass with Dr. James W. Goll

A silhouette of a person with long dark hair, wearing a light-colored sweater, sitting on a rock and reading an open book. The person's hands are clasped together near the book. The background is a soft, hazy sunset or sunrise over a body of water, with a gradient from light orange to pale blue. The overall mood is contemplative and serene.

**Who and What Are Feelers?**

A person is shown in silhouette, sitting on a large rock and reading an open book. The background features a sunset over a body of water, with the sun low on the horizon, creating a warm orange and yellow glow. The person's hair is tied back, and they are wearing a light-colored sweater. The overall mood is contemplative and peaceful.

## A Divine Pondering

I always wondered why human emotions seem to get such a bad rap in the Church. What does God's Word say about them, and how should I understand what I read there?



What is the ideal way to handle my personal emotions? Should I consider them good, or bad, or neutral? How should emotions look in the life of a mature believer?



How does the emotional side of someone's personality blend with spiritual gifts? Should I consider my emotions to be a help or a hindrance when it comes to serving in God's Kingdom?



Emotions and feelings can be weird, as I am sure you know already. How do they fit into sensing and knowing the drawing of the Holy Spirit? Does it help or hinder in hearing the voice of God?



I am not a psychologist and I cannot claim to have the last word on the things of God. But I have tried to make a thorough study of how our human emotions help us to discern the will of God and act accordingly.



It is my great desire to help people everywhere to serve the King and His Kingdom more freely from not only their minds but also through their hearts.



I have learned that we can submit what we have been by God and it can be empowered by the same Holy Spirit.



Feelers Train Their Senses



We each have five natural senses which correspond to spiritual senses. The gifts of the Spirit operate through our natural senses and especially our feeler, emotive realm.



Your natural sense of “touch”  
has a corresponding spiritual  
sense of “prophetic feelings.”



As you surrender your feelings to the Lord, He'll use them as a means through which He deposits His revelation, anointing, discernment, and spiritual gifts to help you discern His voice and His ways.



What are we training,  
according to Hebrews 5:14?  
Our senses, both our natural  
senses and our spiritual  
senses, "... who because of  
practice have their senses  
trained to discern good and  
evil."



These five natural senses are

- 1) sight,
- 2) hearing,
- 3) touch,
- 4) taste, and
- 5) smell.



I add a sixth sense, “knowing,” because our minds are trained to interpret all the information that comes along. These senses correspond to spiritual senses as follows:



Eyes (seeing): Visions and dreams.

Ears (hearing): Voices and sounds.

Heart (feeling): Emotions and feelings.



Tongue (tasting): Good and evil.

Nose (smelling): Good and bad.

Mind (knowing): Divine thoughts and impressions.



A person wearing a white robe is shown from the chest up, holding their hands out in a gesture of offering or prayer. The background is a soft, hazy landscape with a bright light source, possibly the sun, creating a warm, ethereal atmosphere. The text "Is God A Feeler?" is overlaid in the center of the image.

**Is God A Feeler?**

A woman with long dark hair, wearing a white, flowing robe, is shown from the chest up. She is holding her hands outstretched in front of her, palms up, in a gesture of offering or prayer. The background is a bright, hazy sky with soft, white clouds. The lighting is warm and ethereal, suggesting a sunrise or sunset. A green rounded rectangular box is overlaid on the right side of the image, containing the text.

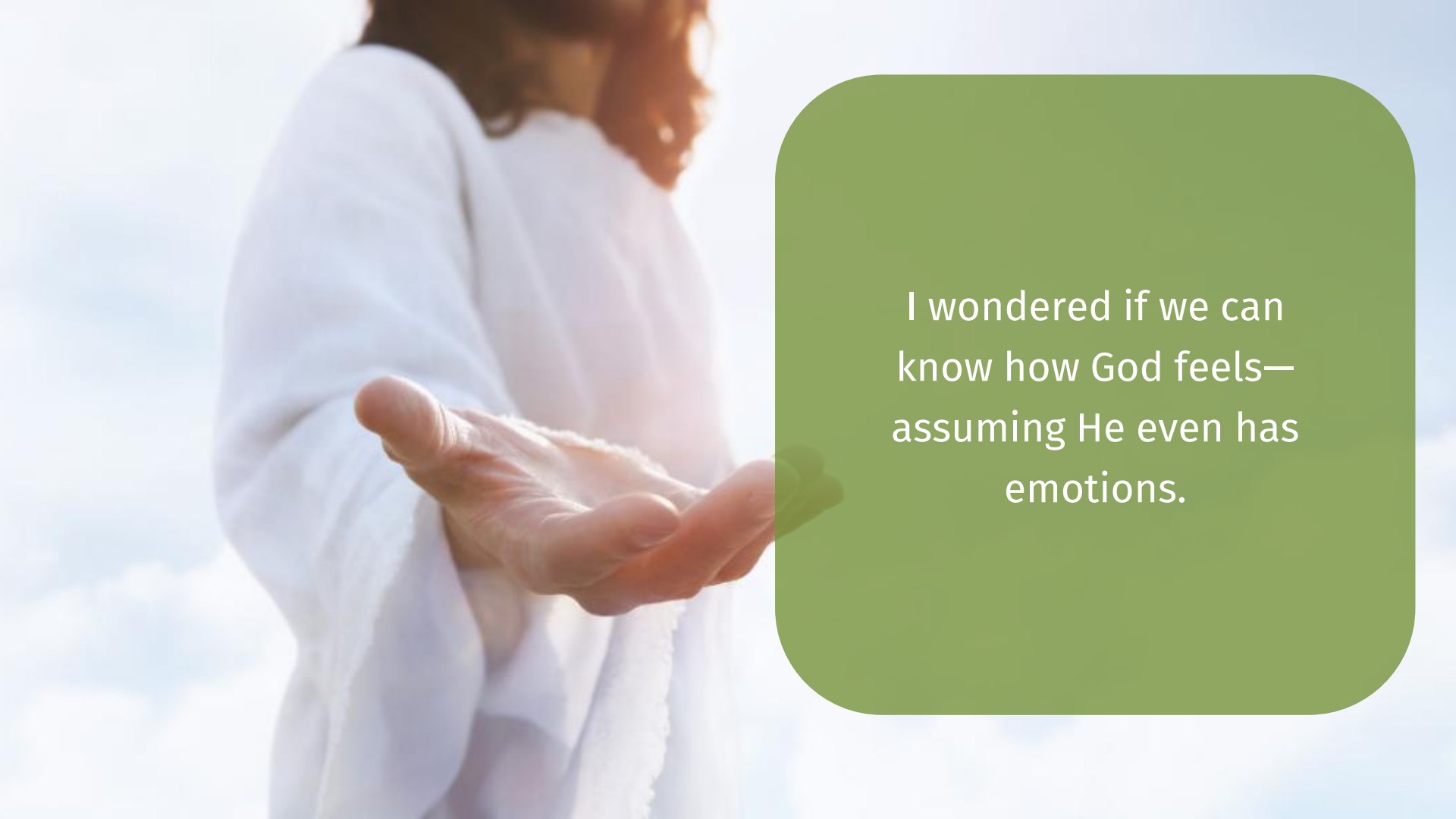
Is God An Emotive God?



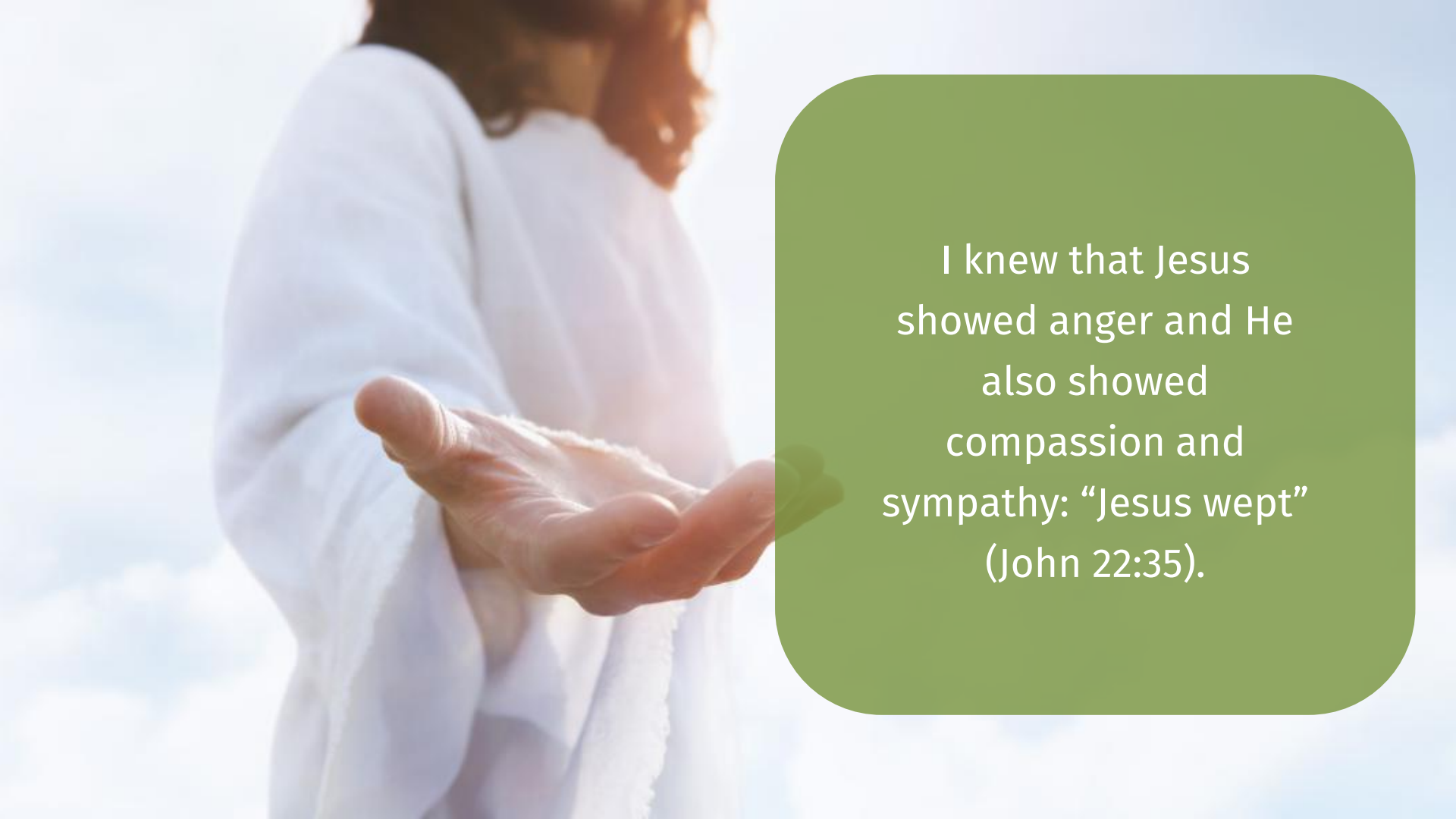
Every question raises new ones. Where do all these emotional feelings come from, anyway? Do they reflect the qualities of the Creator in whose image we have been created?



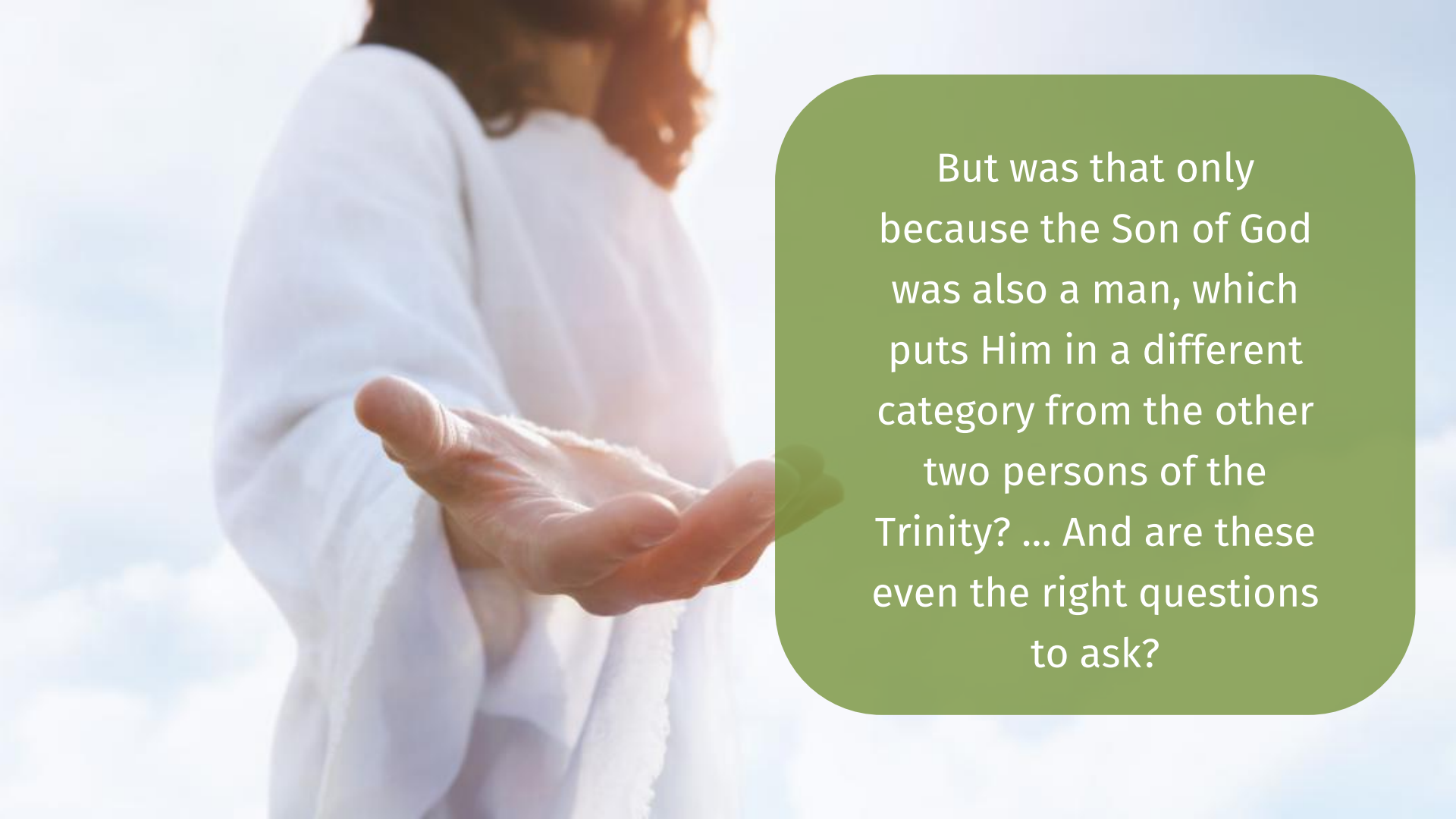
In other words, do we worship an emotive godhead? Or is He objective and far removed from the messy business of human interactions?




I wondered if we can know how God feels—assuming He even has emotions.



I knew that Jesus showed anger and He also showed compassion and sympathy: “Jesus wept” (John 22:35).

A woman with long brown hair, wearing a white, flowing robe, is shown from the chest up. She is holding a small, light-colored object in her right hand, which is extended forward. The background is a bright, hazy sky with soft clouds. The lighting is warm and natural, suggesting an outdoor setting.


But was that only because the Son of God was also a man, which puts Him in a different category from the other two persons of the Trinity? ... And are these even the right questions to ask?

A woman with long brown hair, wearing a white, flowing robe, is shown from the chest up. She is holding her hands outstretched in front of her, palms up, as if offering something or in a gesture of prayer. The background is a bright, hazy sky with soft clouds, suggesting an outdoor setting. The lighting is warm and natural, coming from the upper left, creating a soft glow on her hair and the fabric of her robe.

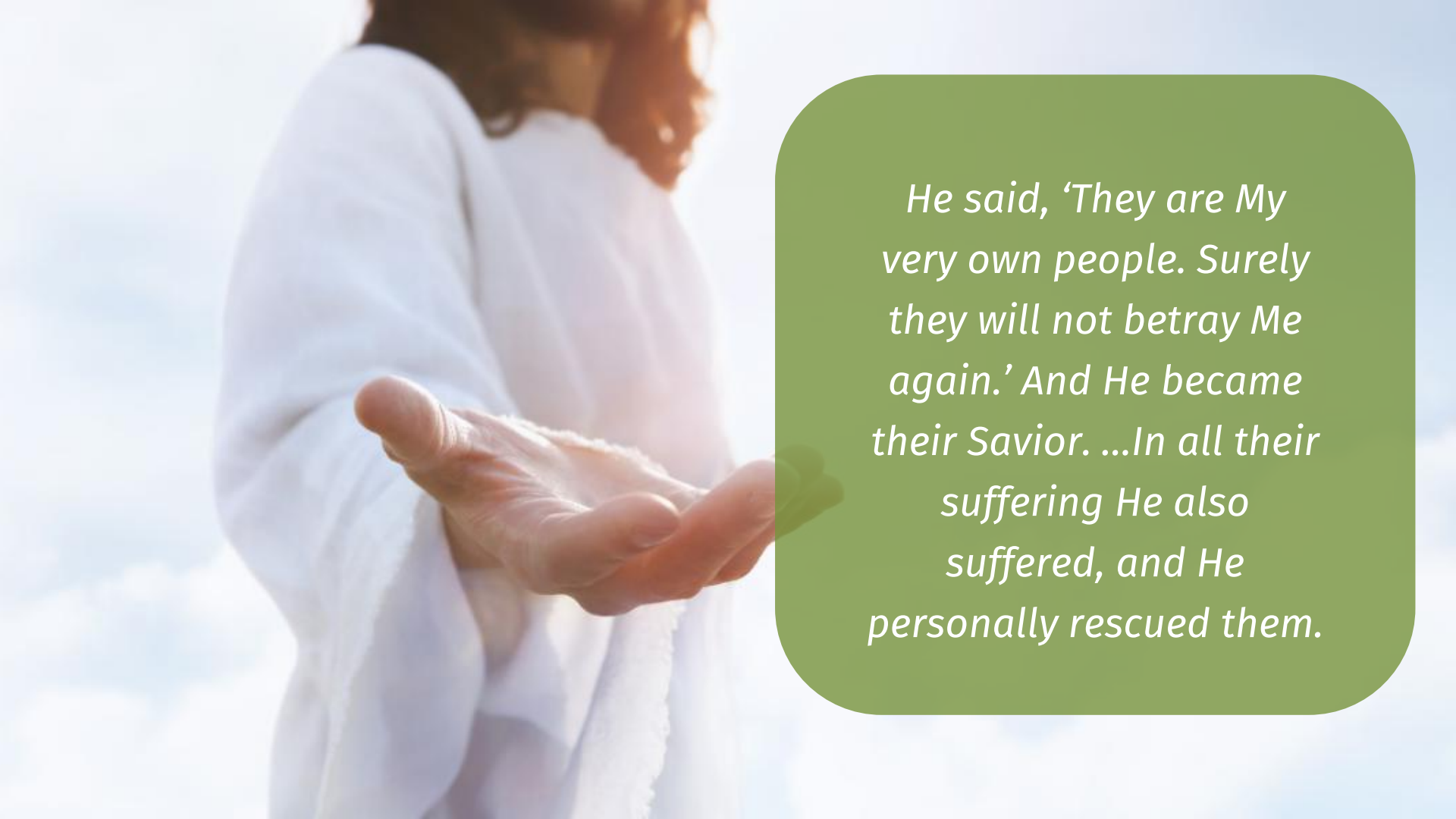
I was amazed and  
reassured to see such a  
variety of strong  
emotions pouring out of  
the heart of the Lord  
God:



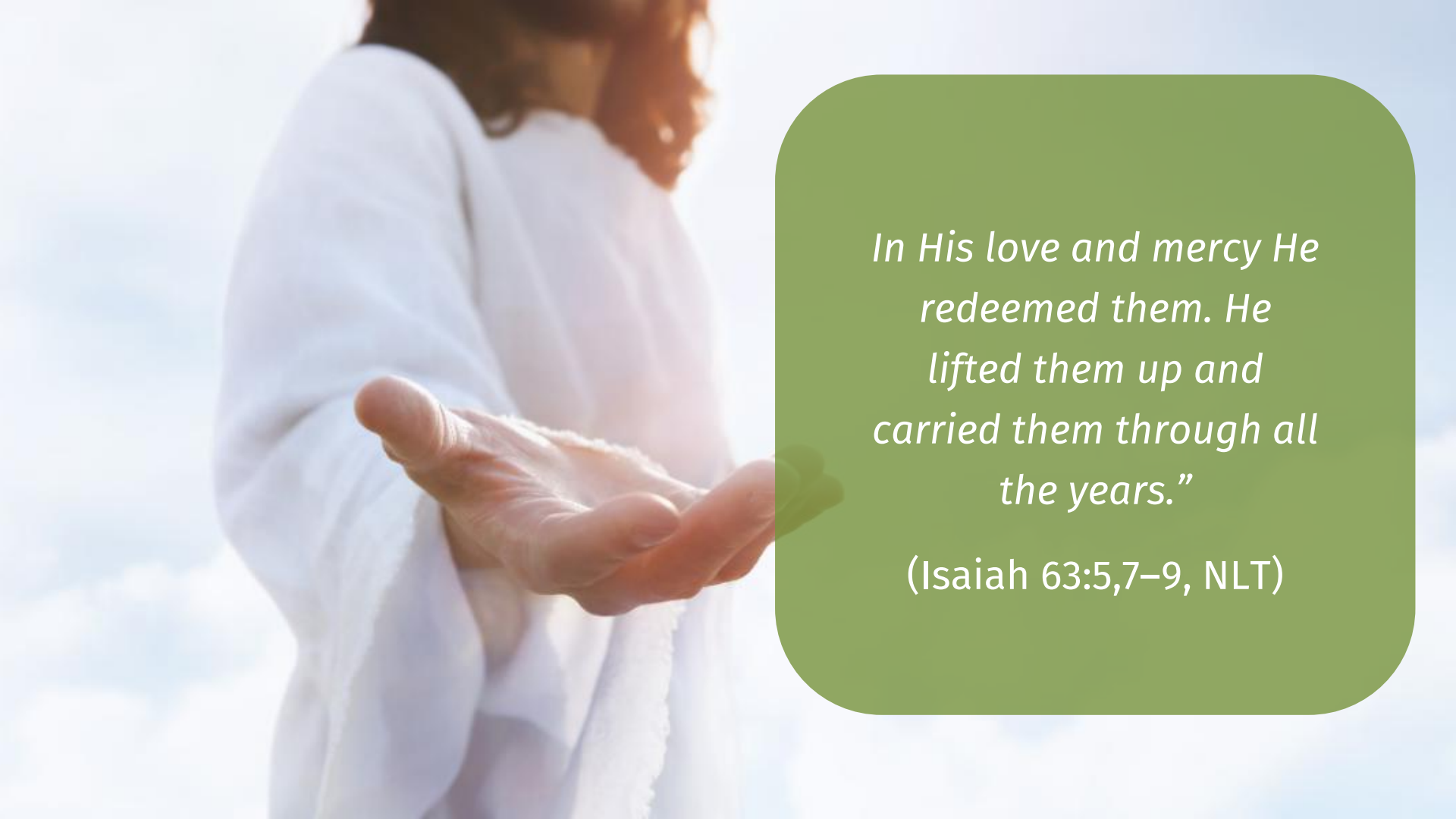
*“I [the Lord God] was amazed to see that no one intervened to help the oppressed. So I Myself stepped in to save them with My strong arm, and My wrath sustained Me...”*

A woman with long dark hair, wearing a white, flowing robe, is shown from the chest up. Her hands are held out in front of her, palms up, in a gesture of offering or prayer. The background is a bright, hazy sky with soft clouds, suggesting an outdoor setting. The lighting is warm and soft, creating a serene atmosphere.

*“I will tell of the Lord’s  
unfailing love. I will  
praise the Lord for all He  
has done. I will rejoice in  
His great goodness to  
Israel, which He has  
granted according to His  
mercy and love.”*

A woman with long brown hair, wearing a white, textured robe, is shown from the chest up. She is holding a small, light-colored object in her right hand, which is extended forward. The background is a bright, hazy sky with soft clouds. The overall mood is serene and hopeful.

*He said, 'They are My very own people. Surely they will not betray Me again.' And He became their Savior. ...In all their suffering He also suffered, and He personally rescued them.*

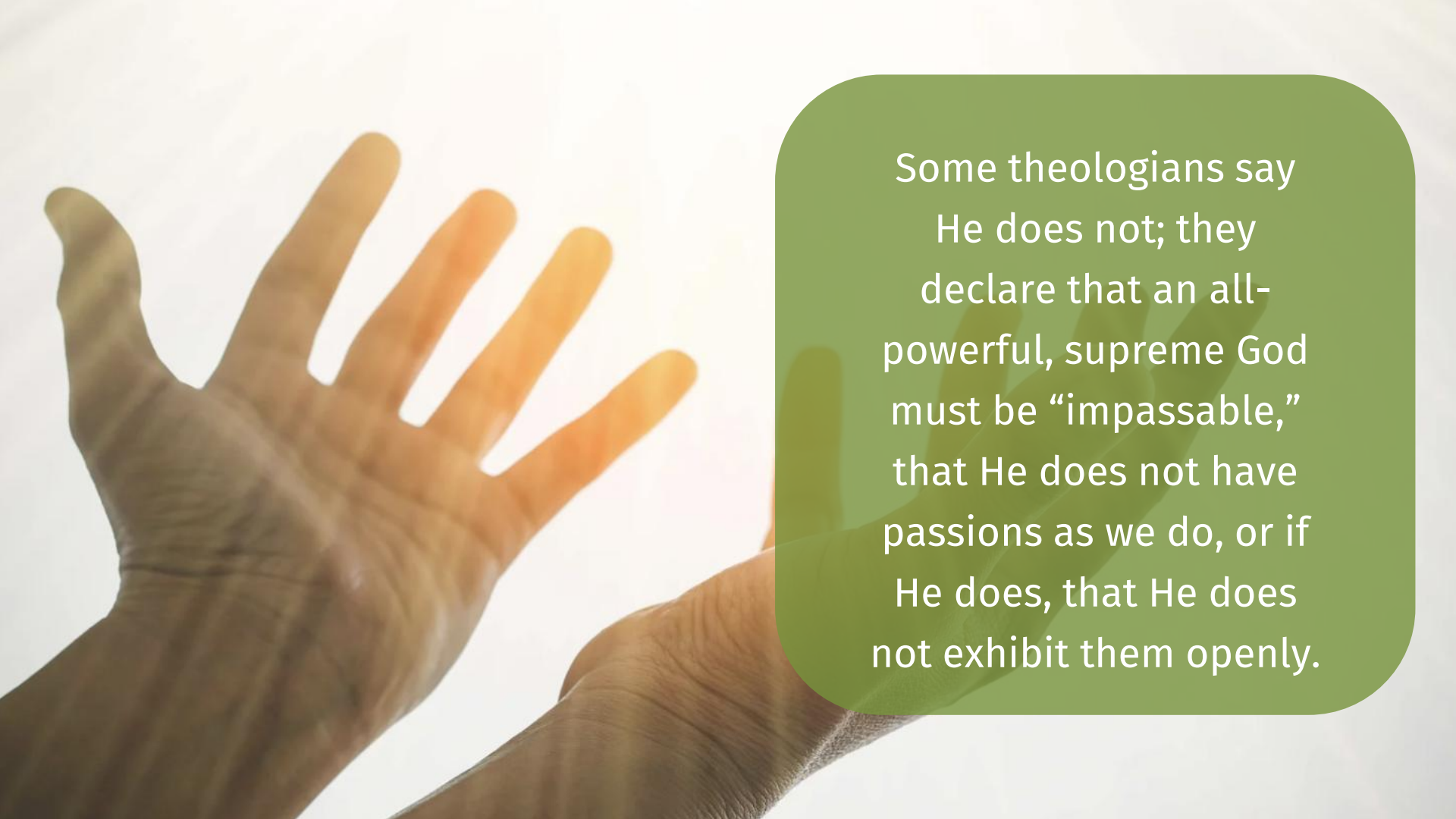


*In His love and mercy He  
redeemed them. He  
lifted them up and  
carried them through all  
the years.”*

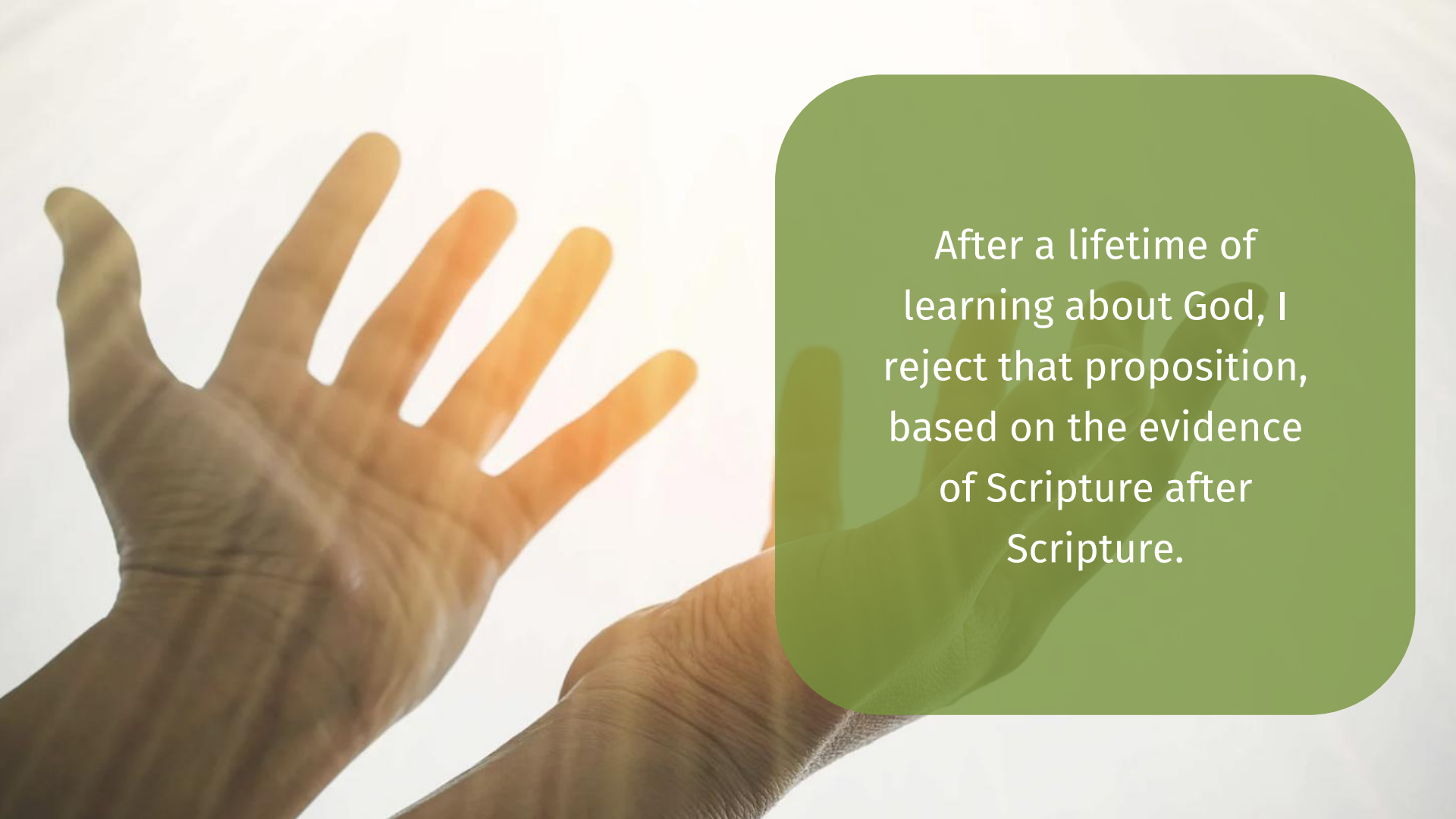
*(Isaiah 63:5,7–9, NLT)*



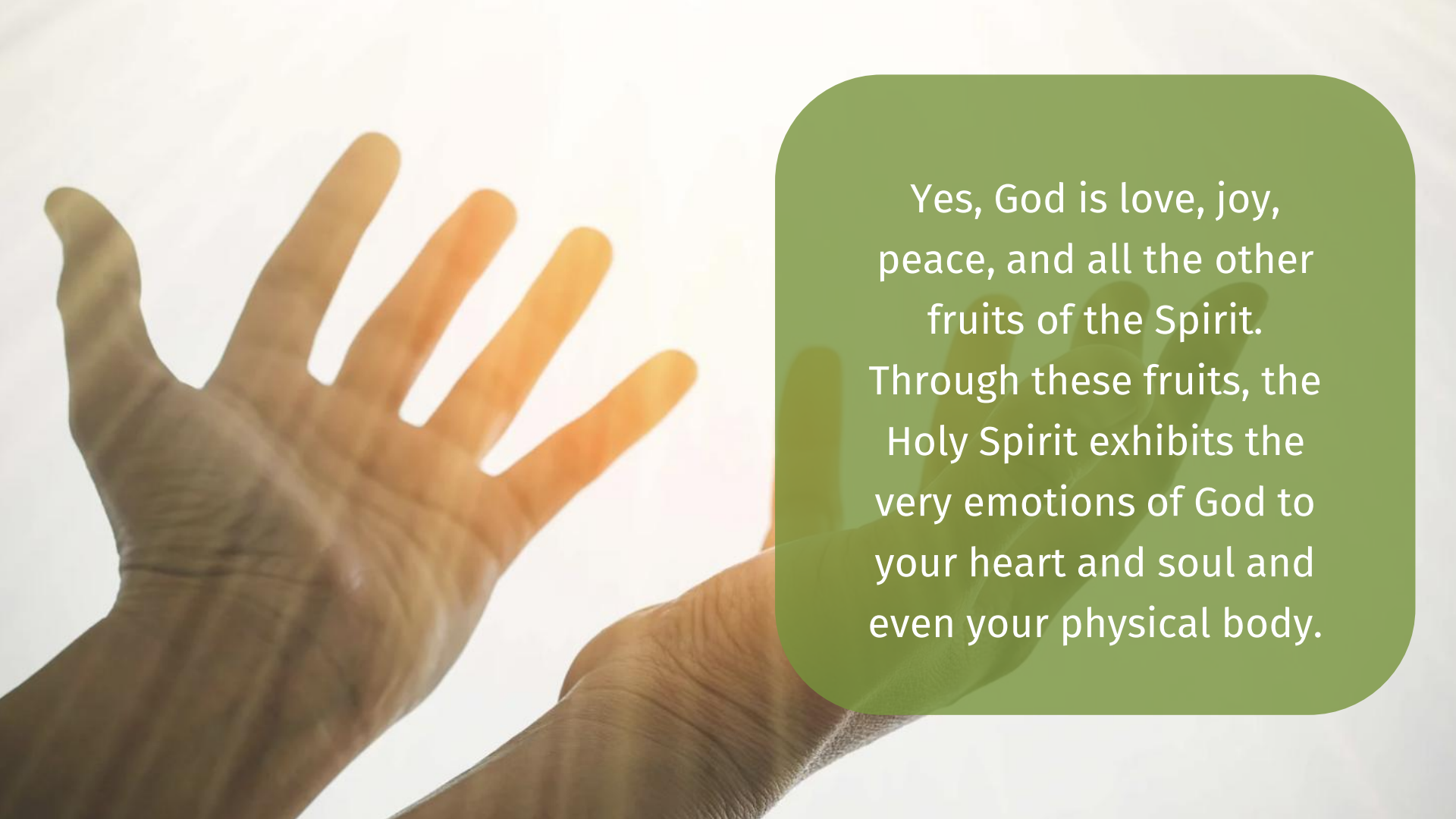
## Embracing the God of Emotions



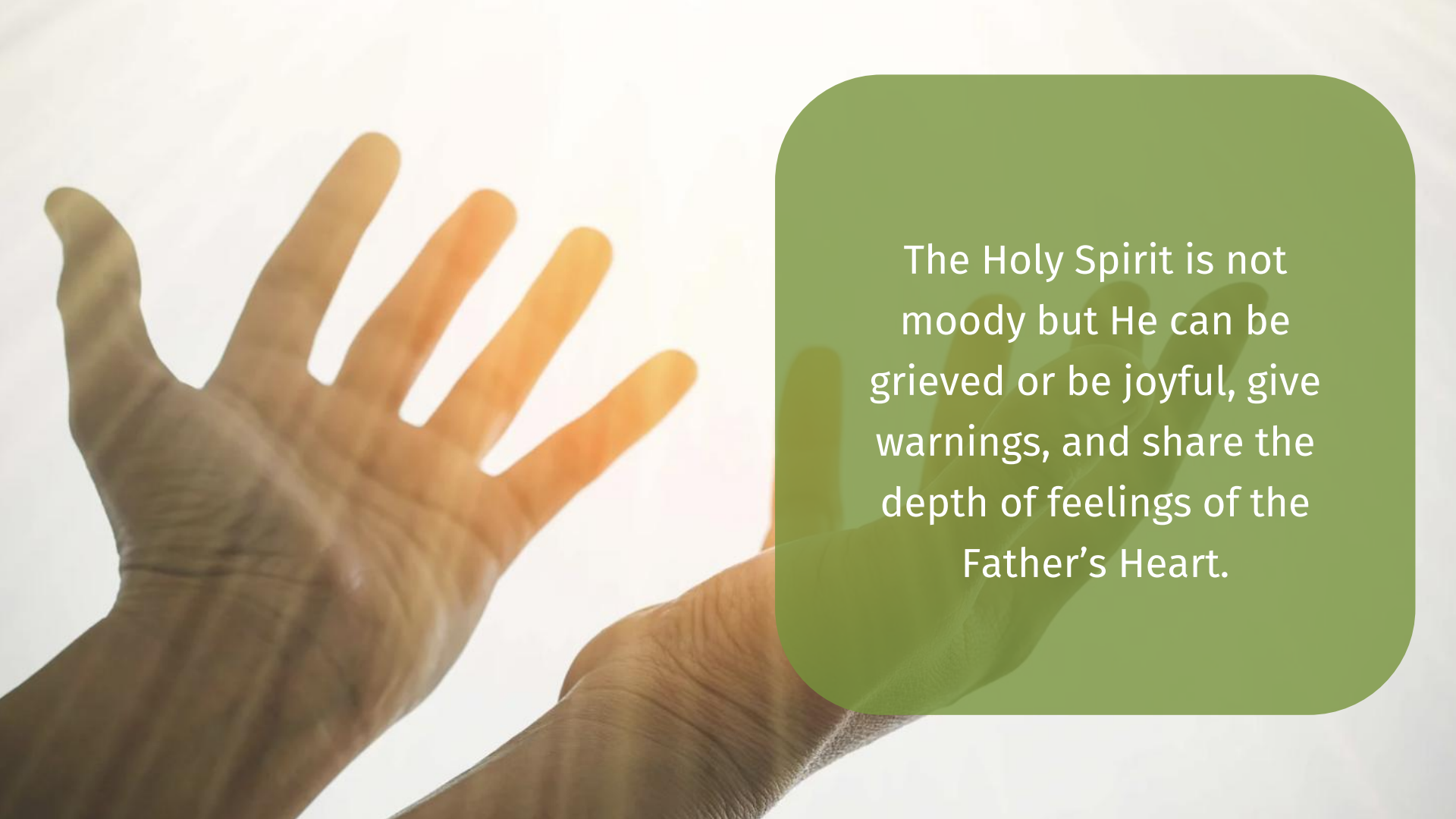
Some theologians say He does not; they declare that an all-powerful, supreme God must be “impassable,” that He does not have passions as we do, or if He does, that He does not exhibit them openly.



After a lifetime of learning about God, I reject that proposition, based on the evidence of Scripture after Scripture.




Yes, God is love, joy,  
peace, and all the other  
fruits of the Spirit.  
Through these fruits, the  
Holy Spirit exhibits the  
very emotions of God to  
your heart and soul and  
even your physical body.



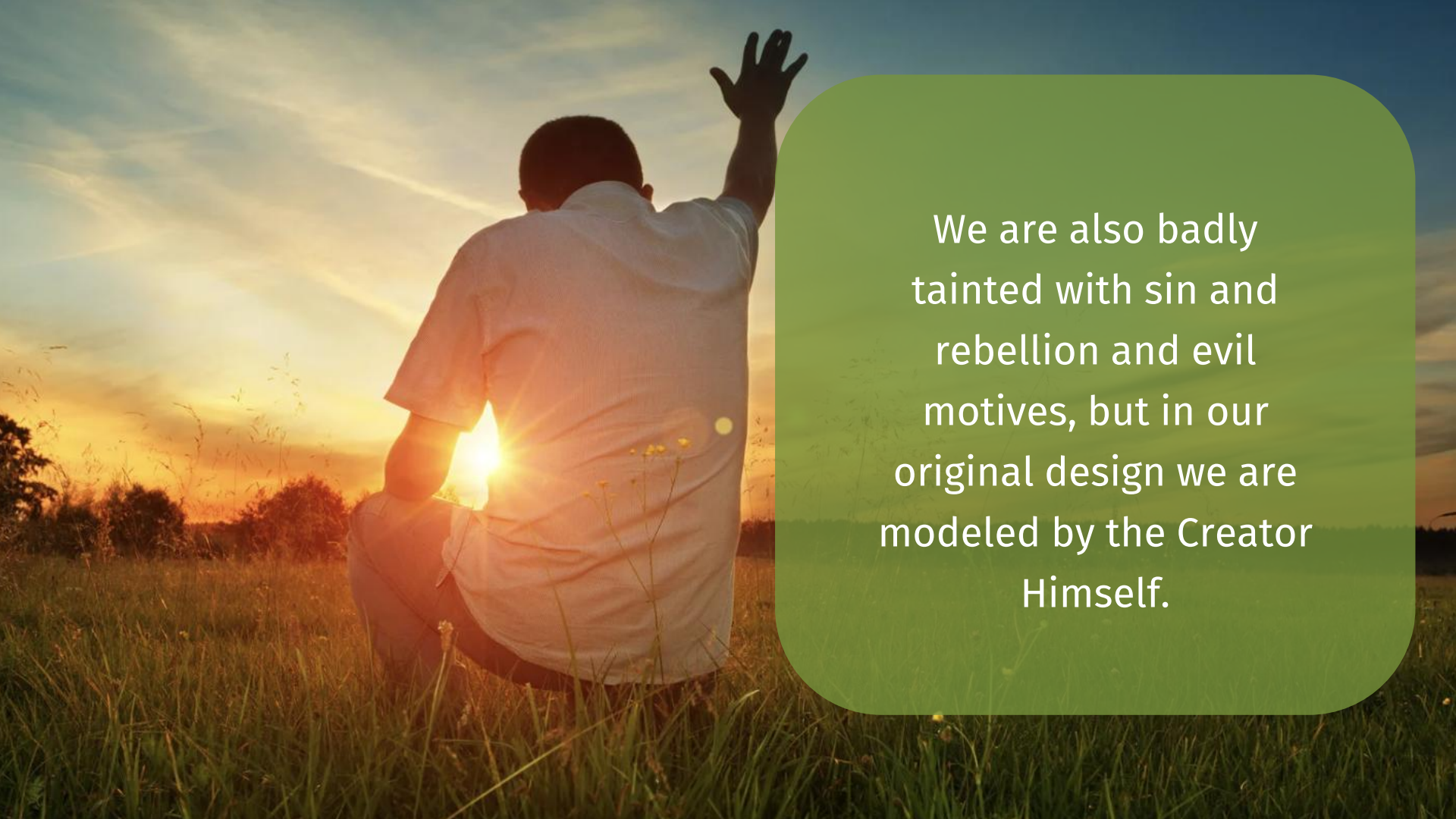
The Holy Spirit is not moody but He can be grieved or be joyful, give warnings, and share the depth of feelings of the Father's Heart.



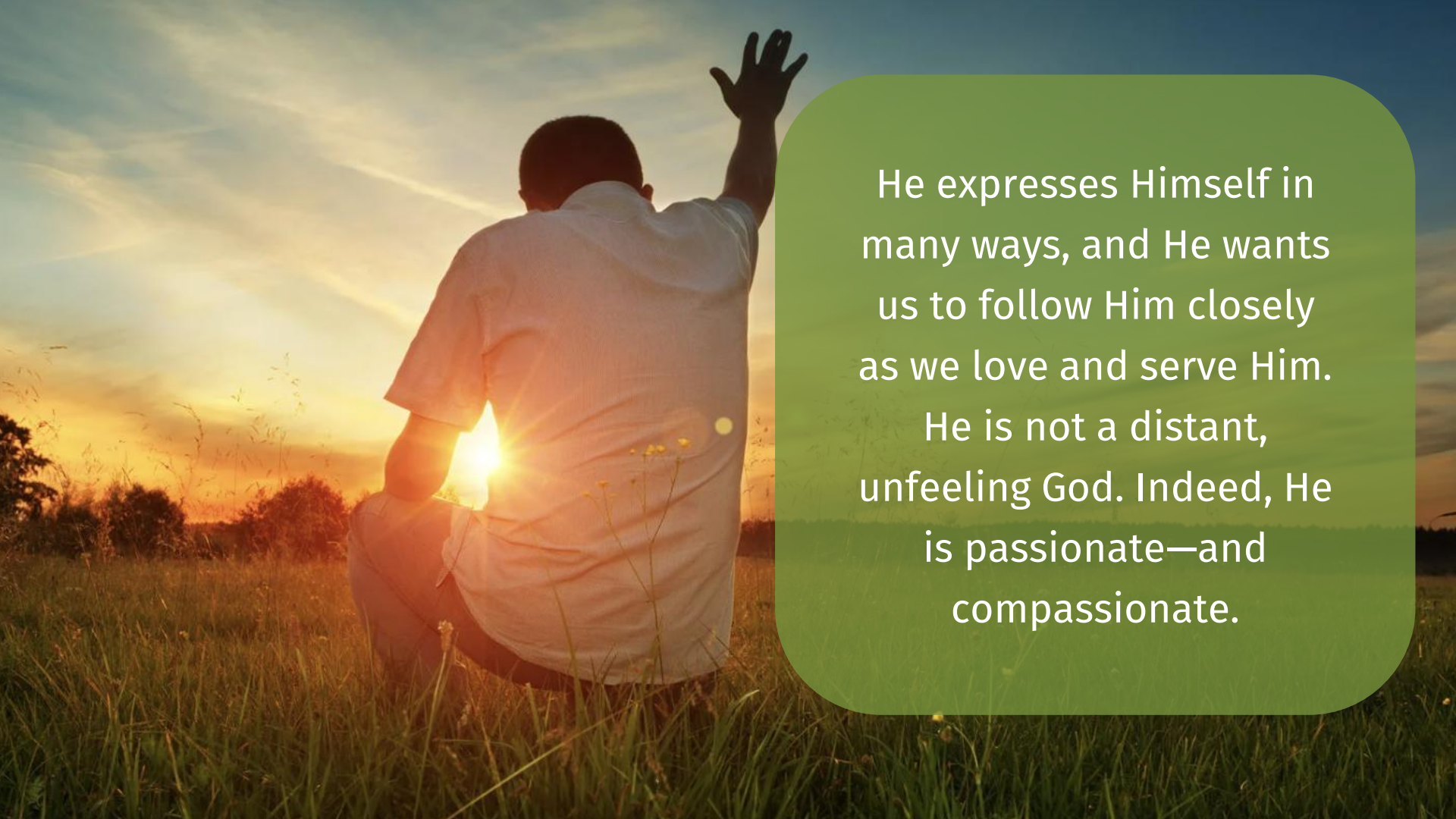
We Are Made in His  
Image

A person is kneeling in a field of tall grass, seen from behind. They are wearing a white t-shirt and light-colored pants. Their right hand is raised towards the sky. The sun is low on the horizon, creating a bright glow and lens flare. The sky is filled with soft, wispy clouds. A green rounded rectangle is overlaid on the right side of the image, containing white text.

We are created in God's image. We have been created as emotional beings because He is that way. The Creator God is Himself emotive.



We are also badly tainted with sin and rebellion and evil motives, but in our original design we are modeled by the Creator Himself.



He expresses Himself in many ways, and He wants us to follow Him closely as we love and serve Him.

He is not a distant, unfeeling God. Indeed, He is passionate—and compassionate.

A person is kneeling in a grassy field, seen from behind. They are wearing a white short-sleeved shirt and light-colored pants. Their right hand is raised towards the sky. The sun is low on the horizon, creating a bright glow and lens flare. The sky is a mix of orange, yellow, and blue. The field is filled with green grass and some small yellow flowers.


Empowered by the Gifts  
of the Holy Spirit

The background of the image is a dense field of dark, closed umbrellas. The umbrellas are arranged in a somewhat chaotic pattern, with their canopies creating a complex, overlapping geometric pattern of triangles and polygons. The color of the umbrellas is a dark, muted grey or black. In the center of the image, one umbrella is highlighted in a bright, vibrant yellow, making it stand out significantly from the rest of the field. The text is centered over this yellow umbrella.


**Who Are These Highly Sensitive  
People?**

The background of the slide is a dense field of dark grey umbrellas, viewed from above. The umbrellas are arranged in a somewhat regular pattern, but one umbrella in the lower right quadrant is a bright, vibrant yellow, making it the focal point of the image. The overall lighting is dark, with the yellow umbrella providing a strong contrast.

## God's Creative Artisans

The background of the image is a dense field of dark grey, almost black, umbrellas. Each umbrella is open and viewed from a slightly elevated angle, creating a repeating pattern of geometric shapes. In the center-right of the image, one umbrella stands out as a bright, vibrant yellow, contrasting sharply with the dark surroundings. To the left of the center, there is a large, rounded rectangular area with a solid yellow background, containing white text.

As we know, God is the Creator. We are made in His image, and therefore the Creator lives in us. I have learned that artisans are especially creative.

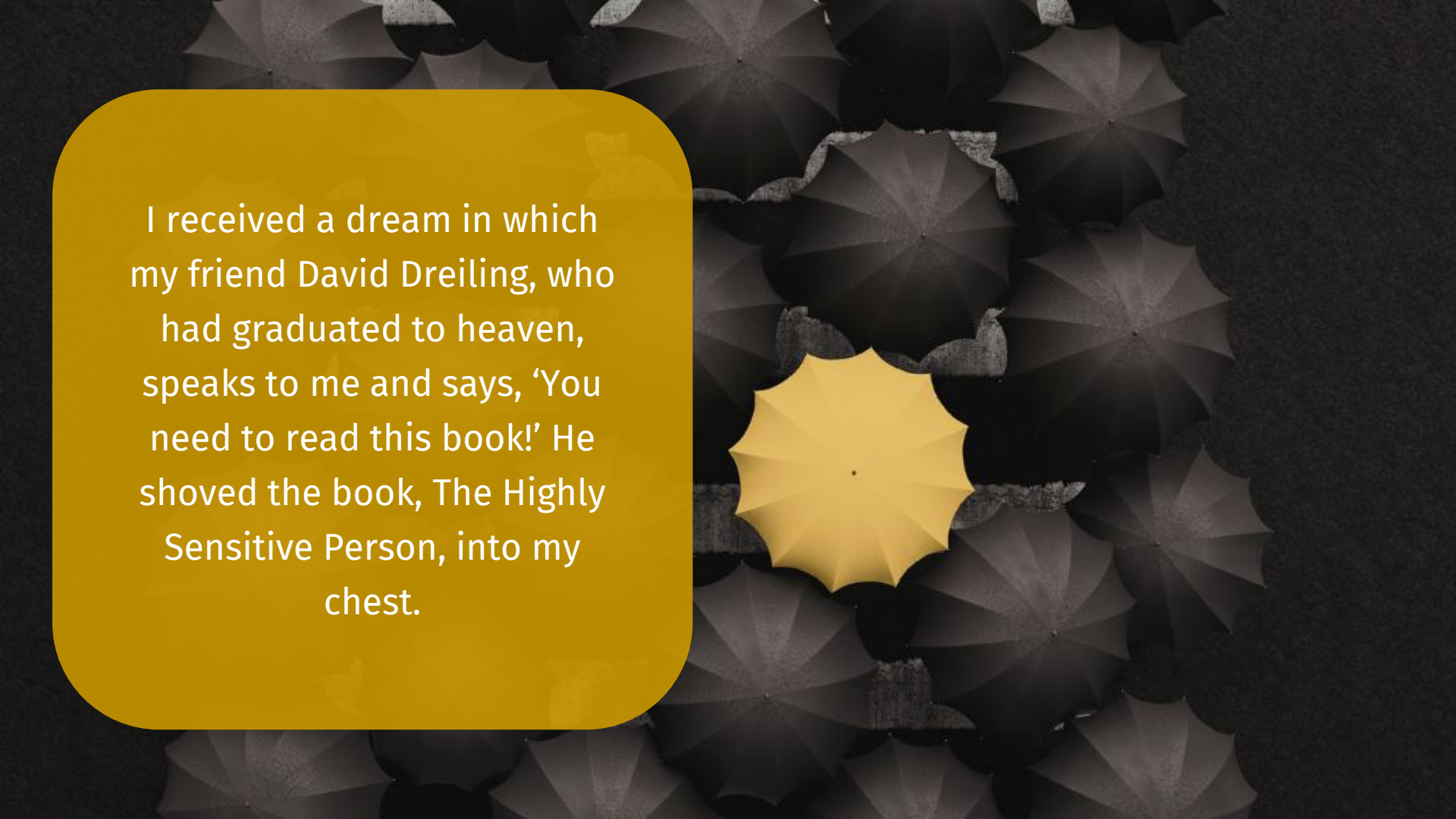
The background of the image is a dense field of dark grey, closed umbrellas. In the center of this field, one umbrella is open and bright yellow, standing out prominently. The umbrellas are arranged in a somewhat regular grid pattern, creating a textured, repetitive pattern.

Living in Nashville, Tennessee,  
I am especially surrounded by  
creative musicians, dancers,  
painters, worshippers, writers,  
designers, and so much more.

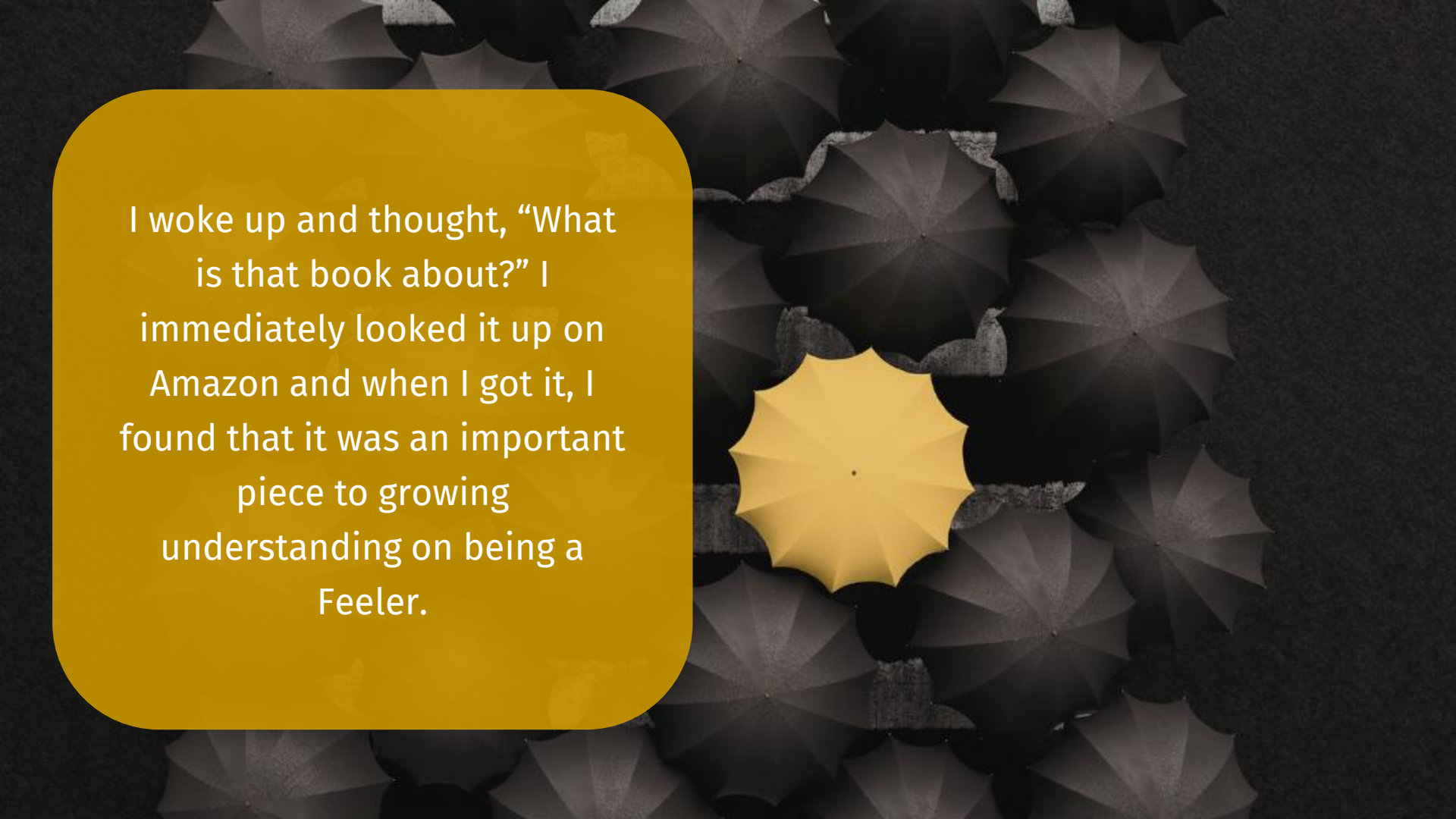
God is a poet! God is a  
Creative, Sensitive Artisan!



David Dreiling Dream




I received a dream in which my friend David Dreiling, who had graduated to heaven, speaks to me and says, 'You need to read this book!' He shoved the book, *The Highly Sensitive Person*, into my chest.



I woke up and thought, “What is that book about?” I immediately looked it up on Amazon and when I got it, I found that it was an important piece to growing understanding on being a Feeler.

The background of the slide is a dense field of dark, textured umbrellas, possibly made of fabric or paper, arranged in a grid-like pattern. The umbrellas are mostly black or dark grey, with some subtle variations in tone. In the center-right of the image, one umbrella is a bright, solid yellow, making it stand out significantly from the rest of the field. On the left side, there is a yellow rounded rectangular box containing the text.

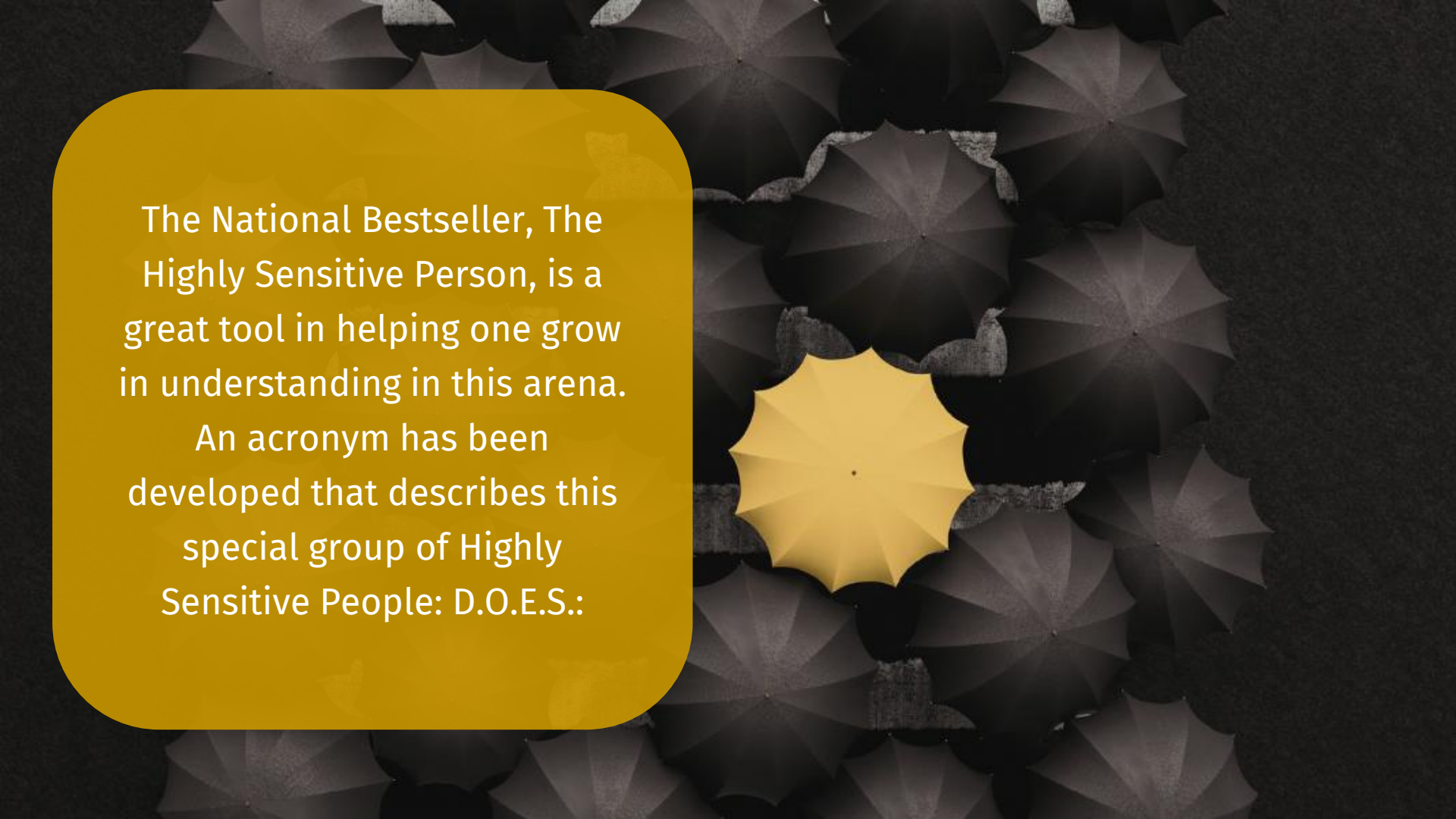
A Distinct Category of People

The background of the slide is a dense pattern of dark grey, semi-transparent umbrellas. In the center-right area, one umbrella is a bright, solid yellow, standing out from the rest. To the left, there is a large, rounded yellow rectangle containing white text.

HSP is a helpful terminology  
recognized in recent years by  
notable leaders in the fields of  
psychology and  
psychotherapy.

It helps to identify and understand a special category or group of people who, by birth and/or by the way they have been shaped by life, to be more sensitive than others.



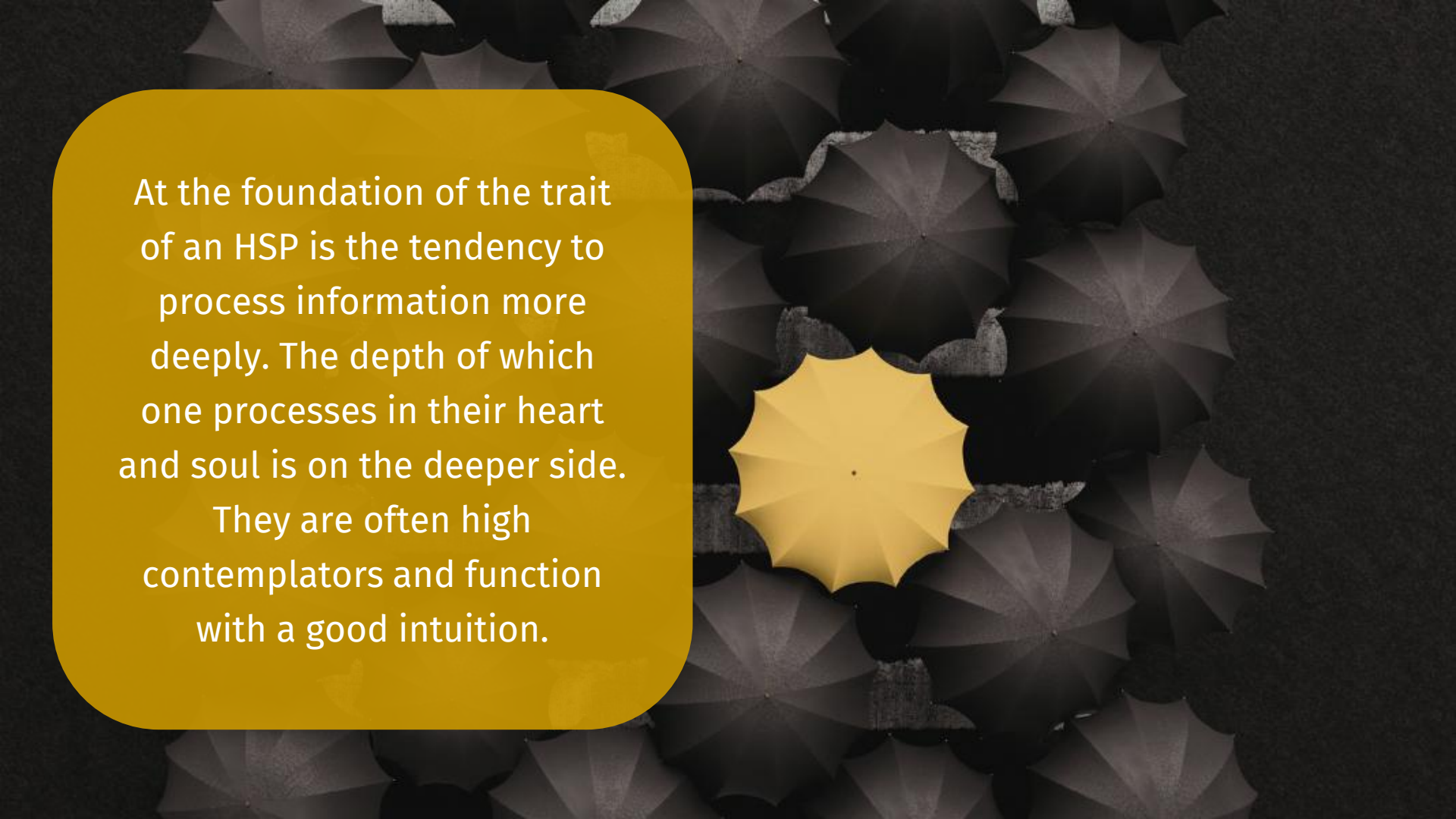


The National Bestseller, *The Highly Sensitive Person*, is a great tool in helping one grow in understanding in this arena.

An acronym has been developed that describes this special group of Highly Sensitive People: D.O.E.S.:



D is for Depth of Processing.

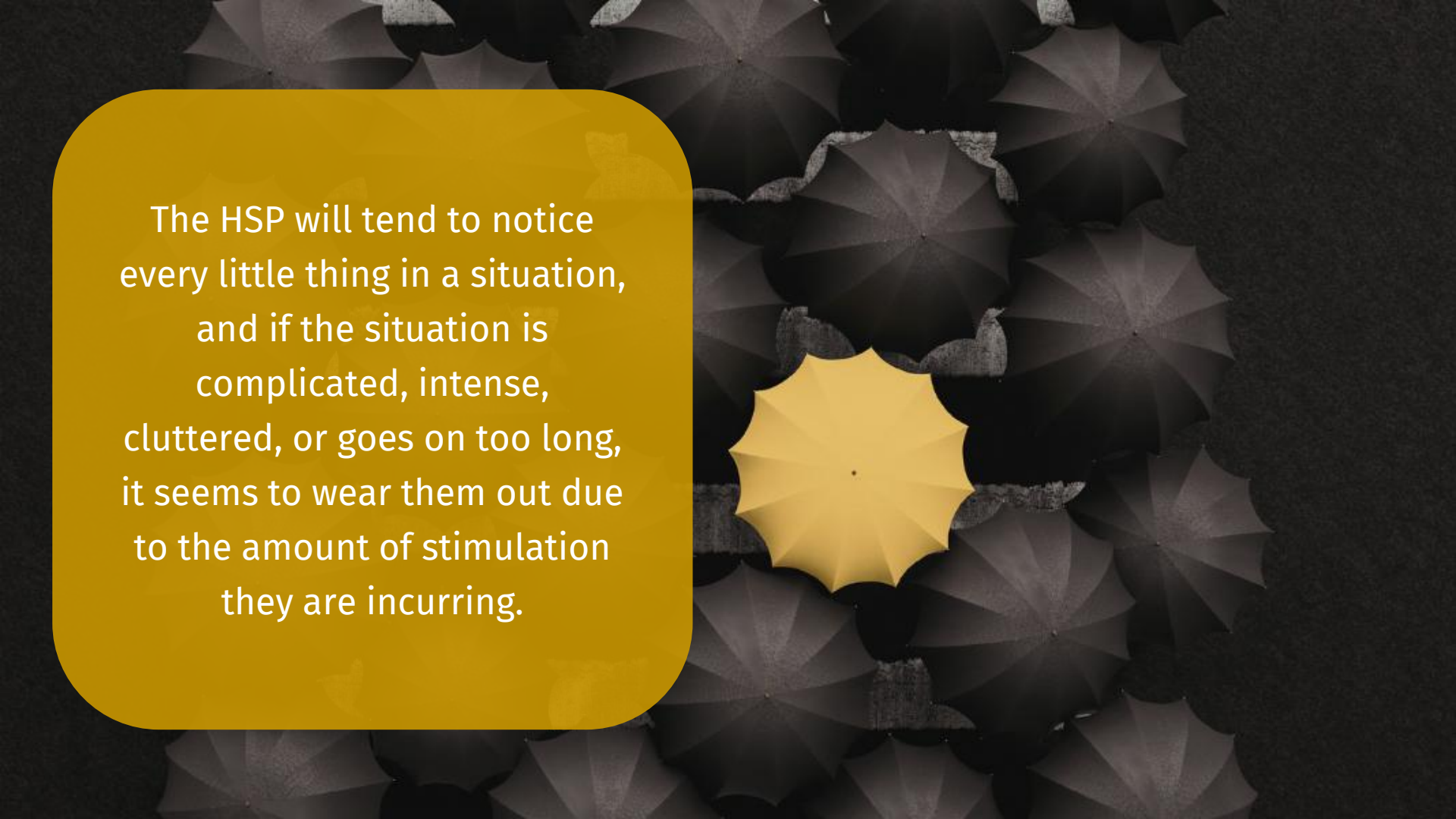


At the foundation of the trait of an HSP is the tendency to process information more deeply. The depth of which one processes in their heart and soul is on the deeper side.

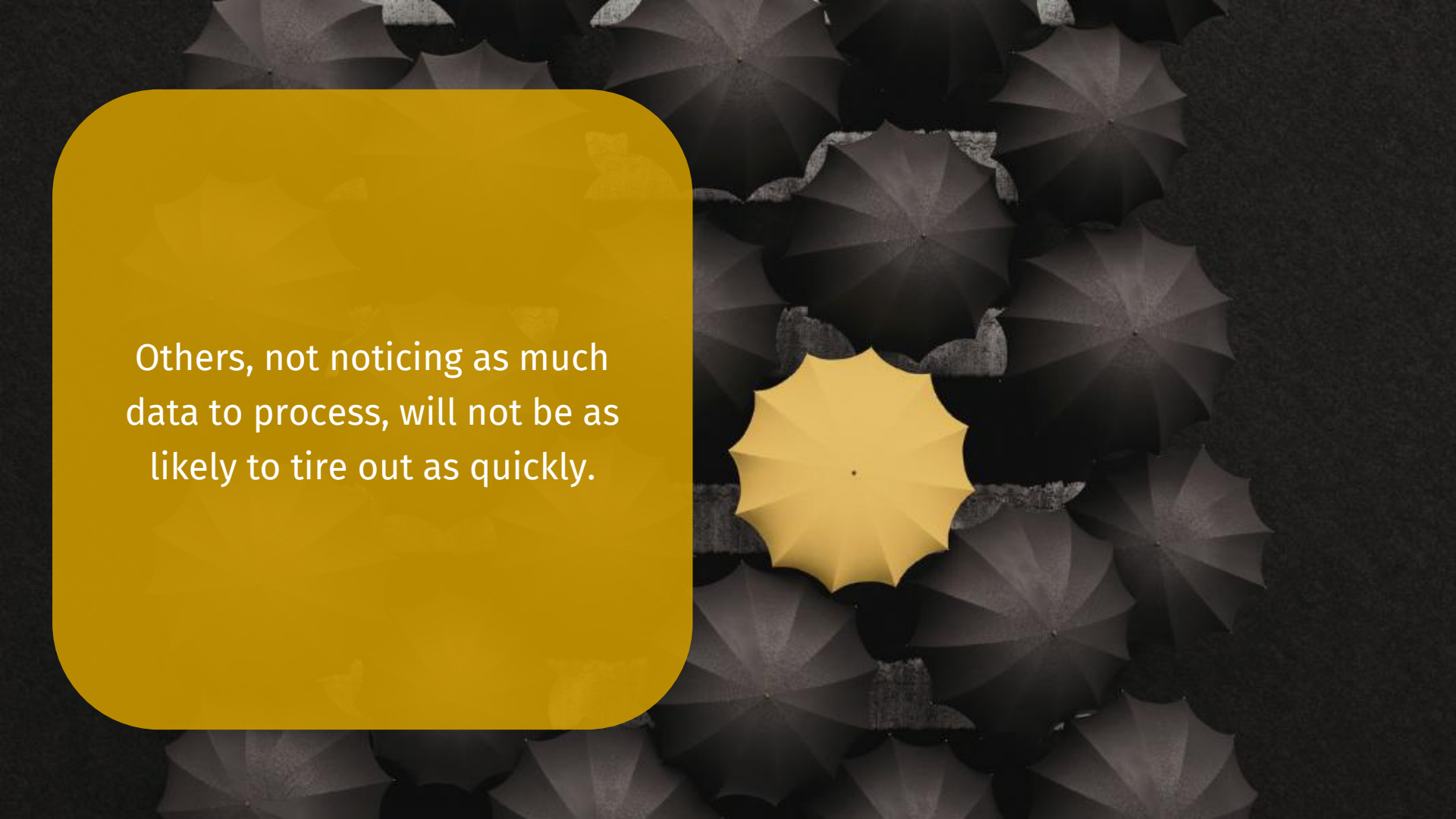
They are often high contemplators and function with a good intuition.

A top-down view of a dense field of dark, textured umbrellas. One umbrella in the lower right quadrant is a bright yellow, standing out from the rest. A yellow rounded rectangle is overlaid on the left side of the image.

O is for Over-Stimulation.



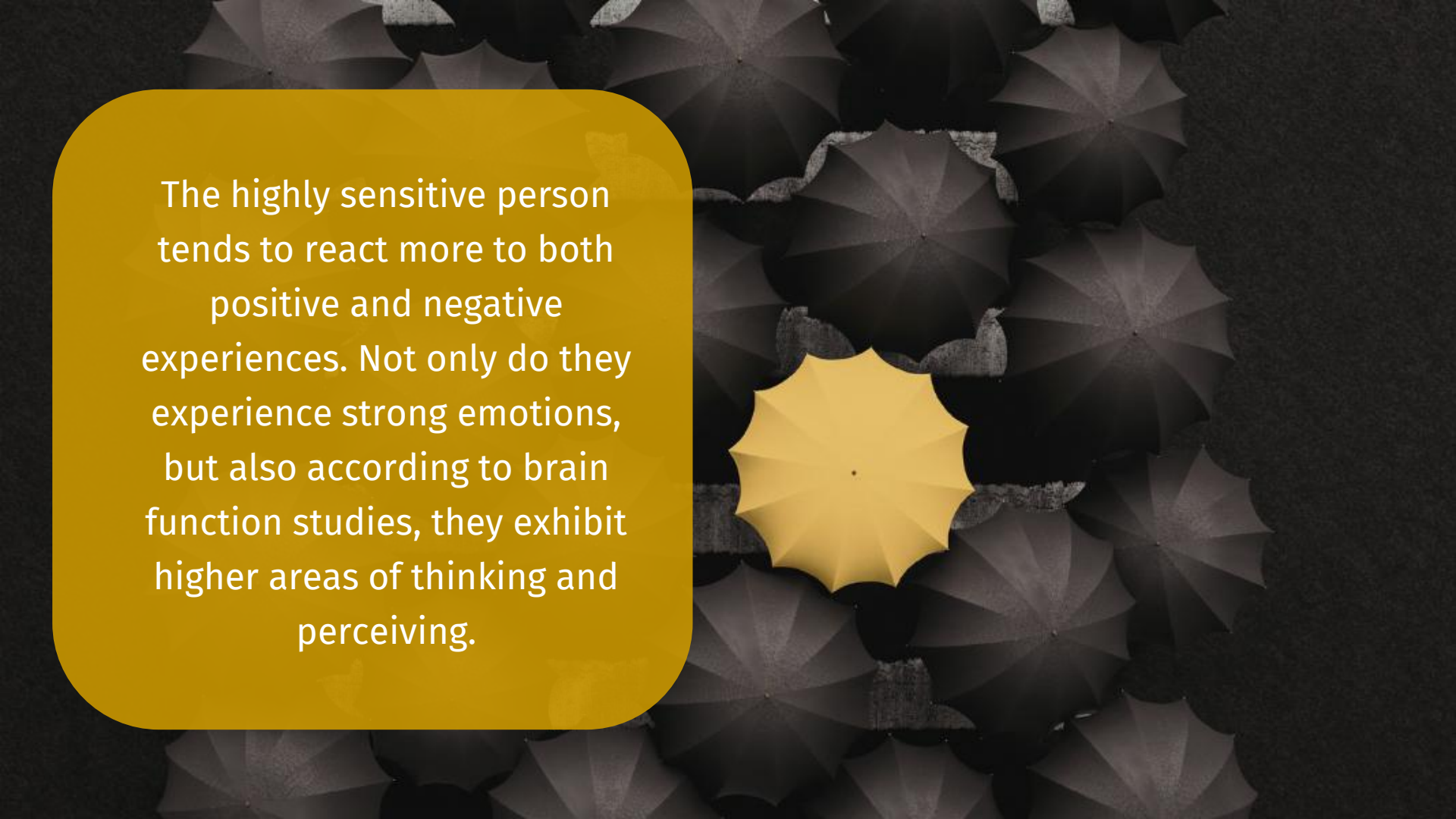
The HSP will tend to notice every little thing in a situation, and if the situation is complicated, intense, cluttered, or goes on too long, it seems to wear them out due to the amount of stimulation they are incurring.

The background of the slide is a dense field of dark grey umbrellas, viewed from above. In the center of this field, one umbrella is a bright, solid yellow, making it stand out significantly from the others. On the left side of the slide, there is a large, rounded yellow rectangle containing white text.

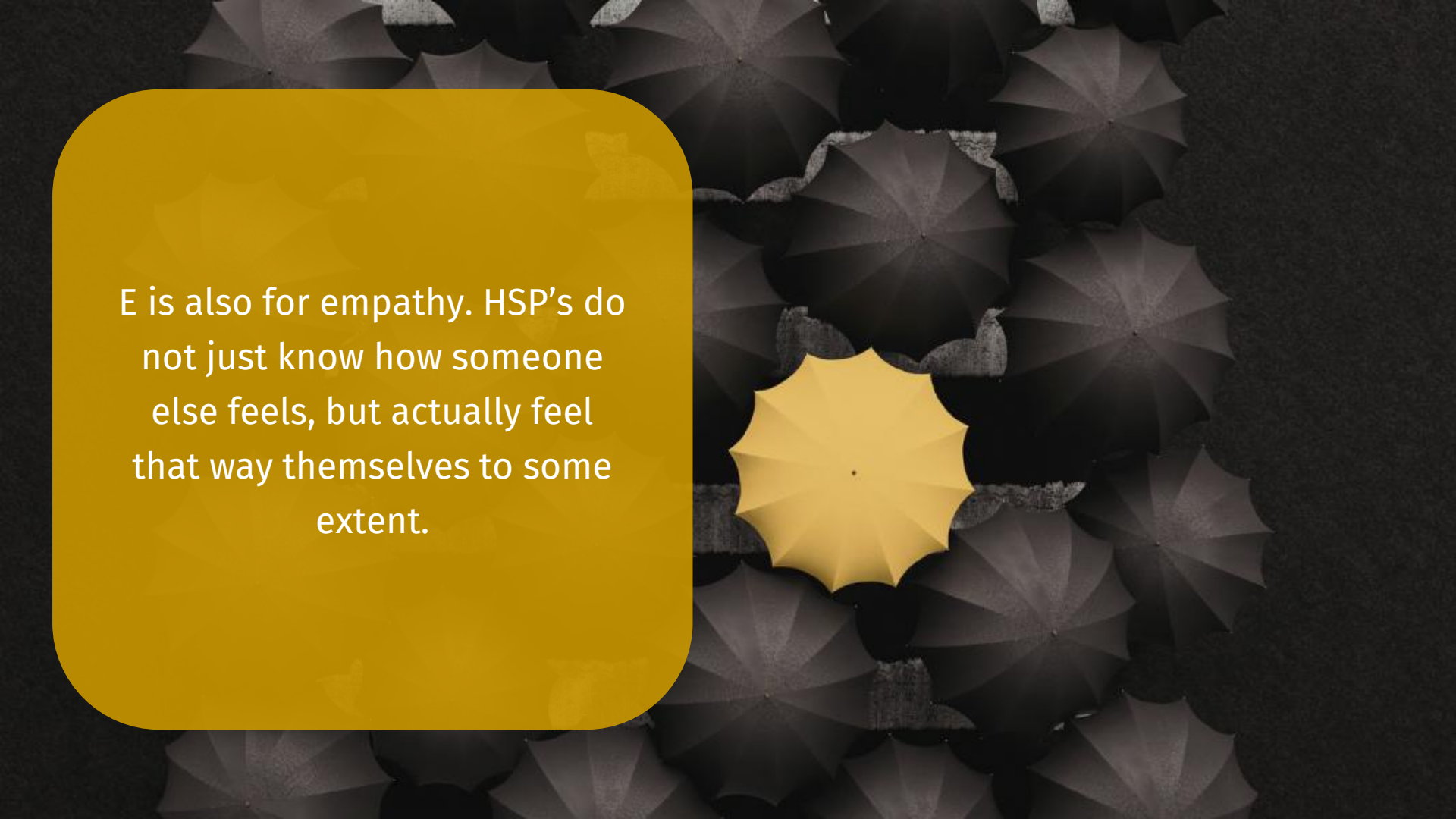
Others, not noticing as much data to process, will not be as likely to tire out as quickly.

A top-down view of a dense field of dark, textured umbrellas. One umbrella in the center-right is a bright, solid yellow, standing out from the rest. A yellow rounded rectangle is overlaid on the left side of the image.

E is for Emotional Reactivity.



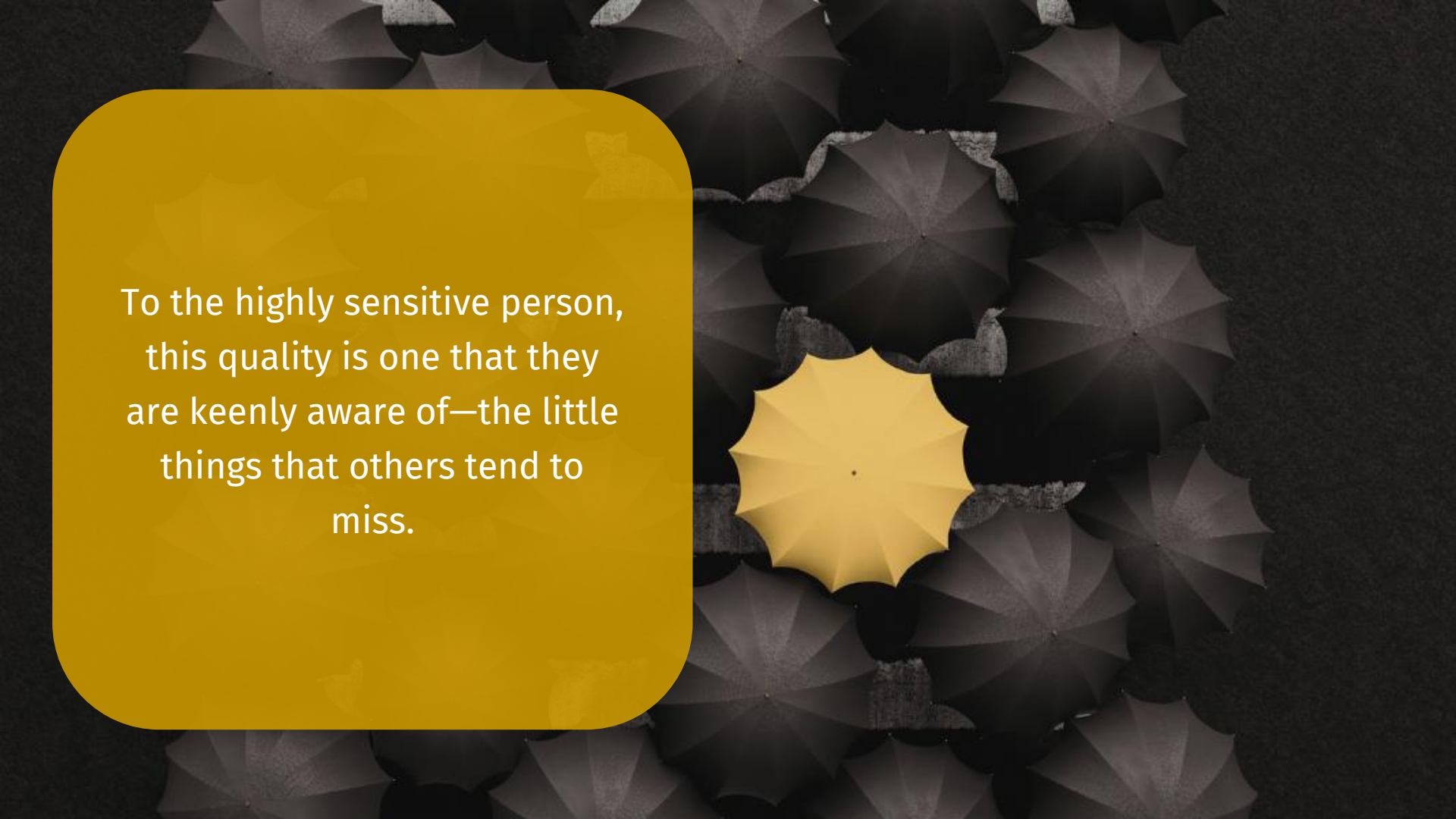
The highly sensitive person tends to react more to both positive and negative experiences. Not only do they experience strong emotions, but also according to brain function studies, they exhibit higher areas of thinking and perceiving.

The background of the slide is a dense pattern of dark grey umbrellas, viewed from above. In the center of this pattern, one umbrella is a bright, solid yellow, standing out prominently. To the left of the umbrellas is a large, rounded yellow rectangle containing white text.

E is also for empathy. HSP's do not just know how someone else feels, but actually feel that way themselves to some extent.

A top-down view of a dense field of umbrellas. Most are dark grey or black, creating a textured, repetitive pattern. One umbrella, located in the lower right quadrant, is a bright, solid yellow, making it the focal point of the image. The umbrellas are arranged in a somewhat regular grid, with some overlapping.

S is for Sensing the Subtle.

The background of the image is a dense field of dark grey umbrellas, viewed from above. The umbrellas are arranged in a somewhat regular pattern, creating a textured, repeating pattern. In the center of the image, one umbrella stands out as a bright, vibrant yellow, contrasting sharply with the dark grey of the surrounding umbrellas. This central yellow umbrella is slightly larger and more prominent than the others, drawing the viewer's eye.

To the highly sensitive person,  
this quality is one that they  
are keenly aware of—the little  
things that others tend to  
miss.

The awareness of subtleties is useful in a number of ways, from simple pleasures in life to strategizing a response based on the awareness of others' nonverbal cues about their mood or trustworthiness.



A surreal landscape featuring a path of rippled sand leading towards a blue, ethereal tunnel. The sand in the foreground is dark brown and has a wavy, textured appearance. The tunnel is formed by two large, blue, textured walls that curve inward, creating a sense of depth and mystery. The lighting is soft and atmospheric, with a bright light source at the end of the tunnel, casting a glow on the surrounding environment. The overall color palette is dominated by blues and browns, creating a dreamlike and otherworldly atmosphere.

**Let's Explore the Feeler Realm**



With practice and discernment, you can learn to recognize, filter, and understand the often-subtle ways the Holy Spirit speaks directly to your heart, emotions, and intuition, bringing divine revelation through your sanctified feelings.



For example, you can  
grow in your capacity to:



Discern angelic and  
demonic spirits by  
sensing and feeling their  
presence.



Receive words of  
knowledge and  
experience gifts of  
healings through  
sensations.



Detect a spirit of  
witchcraft by feeling a  
pain behind your eyes.



As you mature in the supernatural ways of Jesus, He can more effectively use you to minister His life and gifts to others.



Through grounded scriptural teaching, lessons from Church history, modern testimony and personal experience, you will learn to grow practically in receiving and discerning spiritual revelation.



You will learn to be  
more sensitive to His  
voice!



Declare with me that you  
want to learn to:



Identify the emotions of  
God

Recognize how the Holy  
Spirit communicates gifts  
and revelation.



Respond appropriately to  
your feelings.

Embrace your sensitive  
nature.



Detect the gifts and fruits  
of the Holy Spirit through  
feelings.

Cooperate with and flow  
in the power of God.

Live a naturally  
supernatural life.

An open book with a small green plant growing from a hole in the center of the pages. The plant has three leaves and is growing out of a mound of dark soil. The background is a soft, warm yellow glow.

# A Prayer of Discovery

Father, because of Jesus and Your Spirit, I want to serve You with a life full of adventure. I present myself and the members of my body to You. I bring You my personality, my sensitivity level, and my weaknesses.



I want Your Holy Spirit to  
descend upon me and  
empower my life as You did  
with Jesus. (John 3:16–17)



I desire to hear Your voice in a greater manner than I ever have before. Fill me. Shape me. Use me. Give me a heart of tenderness for Your Kingdom's sake. Mold me to suit Your will to fulfill the greatness of Your ways.



I declare that You are the  
potter and I am the clay. I  
want to discover how  
sensitivity can help me to  
discern the voice of God.  
Amen and amen!



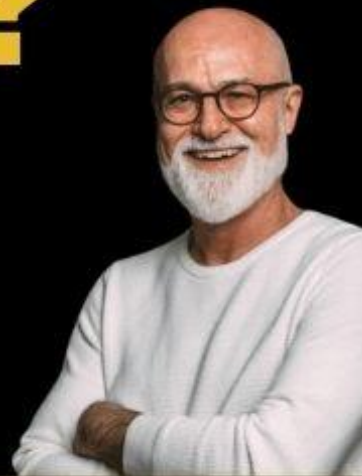
A silhouette of a person with their arms raised in prayer, set against a dramatic sunset sky. Numerous birds are flying around the person, and the word "Prayer" is written in a bold, black font across the center of the image. The overall scene is bathed in warm, golden light, suggesting a peaceful and spiritual atmosphere.

**Prayer**



# Are You a **FEELER?**

How Sensitivity  
**HELPS YOU DISCERN**  
God's Voice



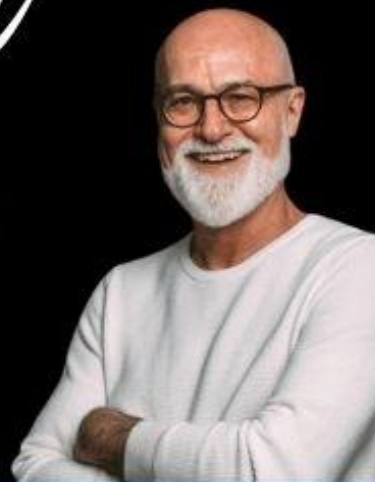
Free Masterclass with Dr. James W. Goll

A person with curly hair is sitting on a wooden dock, reading a book. The background is a sunset over a body of water with a forested hill in the distance. The sun is low on the horizon, creating a warm, golden glow.

EXPLORING THE

# *Feeler's Realm*

*Discerning God's Revelation  
in an Emotional World*



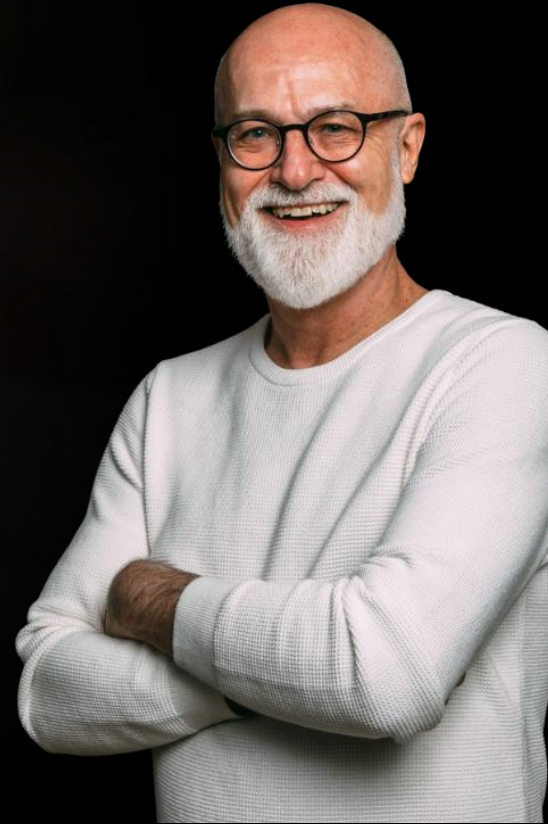
12-Lesson Course with Dr. James W. Goll



# EXPLORING THE *Feeler Realm*

## In this course, you will learn how to:

- Discern whether feelings come from God, yourself, others, or the enemy
- Turn deep sensitivity into a powerful channel for hearing God
- Respond wisely (not reactively) to impressions, atmospheres, and emotions
- Flow safely in burden-bearing, conviction, compassion, gifts, and glory without overload
- Ground your feeler realm in Scripture, community, and the fear of the Lord
- Break free from shame, fear of deception, isolation, and emotional exhaustion

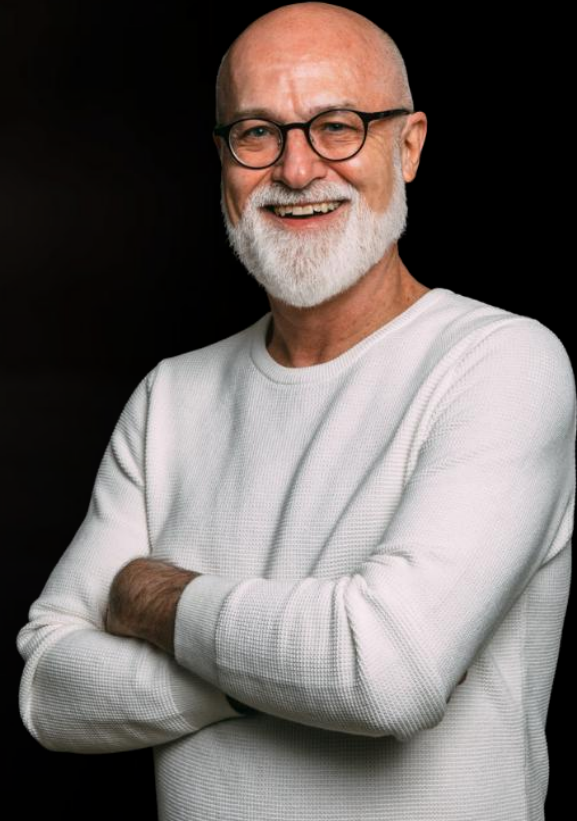




# EXPLORING THE *Feeler's Realm*

## Overview of Lessons

- **Lesson 1:** Experiencing the Emotions of God
- **Lesson 2:** Your Natural and Spiritual Senses
- **Lesson 3:** Jesus and the Heart of Compassion
- **Lesson 4:** Sensitivity
- **Lesson 5:** How to Respond to Feelings
- **Lesson 6:** The Fruits of the Spirit

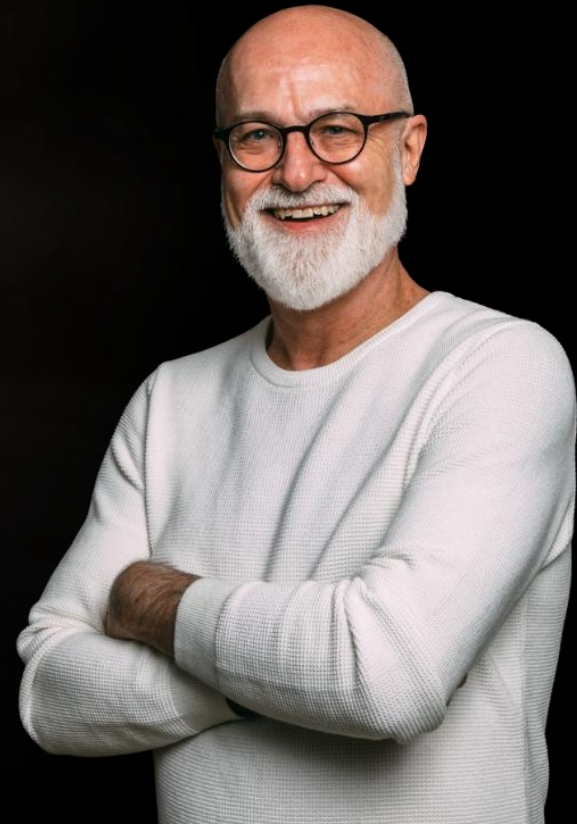




# EXPLORING THE *Feeler's Realm*

## Overview of Lessons

- **Lesson 7:** The Gifts of the Spirit
- **Lesson 8:** The Power of Conviction
- **Lesson 9:** Burden Bearing
- **Lesson 10:** Discerning Atmospheres
- **Lesson 11:** Wisdom for Feelers
- **Lesson 12:** Flowing in the Power of God





# EXPLORING THE *Feeler Realm*

**BONUS:**  
**70% Cash Savings**  
(MUST SIGN UP BY APRIL 7)

The normal retail price for this 12-Lesson Class with LIVE Q&A and all associated resources is \$1,000. However, you receive a \$700 savings, making your price only \$300.





# EXPLORING THE *Feeler Realm*



## THE BEST OF THE *Holy Spirit* TODAY

**ONE:** Holy Spirit, You Are Welcome Here

**TWO:** How the Holy Spirit Moves

**THREE:** Baptized in the Holy Spirit, Part 1

**FOUR:** Baptized in the Holy Spirit, Part 2



**BONUS**

**4 MP3 Message Set by Dr. James W. Goll**

## **BONUS 2:** **The Best of The Holy Spirit Today**

**4 MP3 MESSAGE SET BY JAMES W. GOLL**

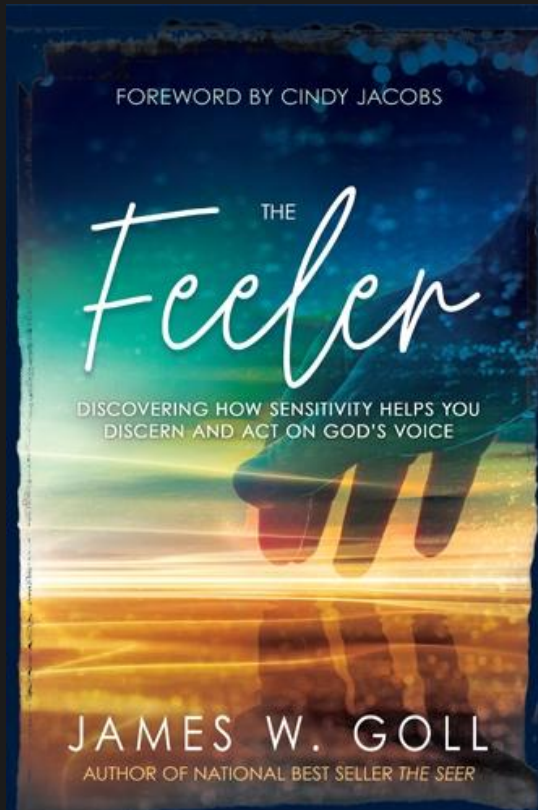
**(MUST SIGN UP BY APRIL 4)**

In this MP3 message set, you will learn how to intentionally welcome the manifest presence of God into your everyday life, recognize and respond to the ways the Holy Spirit is moving, and confidently share about the life-changing baptism of the Spirit.

As your understanding grows, so will your sensitivity —leading you into a lifestyle of closeness with God that reshapes how you live, hear, and respond.



# EXPLORING THE *Feeler* Realm



**BONUS:**

**The Feeler**

BOOK BY JAMES W. GOLL

SHIPPED FREE ANYWHERE IN THE WORLD!

(MUST SIGN UP BY APRIL 1)

*The Feeler* by James W. Goll delivers a remarkable biblical perspective on our emotions and how they help us to discern and act on God's voice. We experience the love, joy, and presence of God with our feelings. Our emotions have an impact on our bodies, our level of holiness, our relationships, and our decisions. This book will show you how to listen for and recognize the often subtle ways God's Spirit speaks to believers, as well as how to discern good and evil spirits.

**FAST ACTION**

**2 FOR 1 OFFER**

**LIMITED TIME**

You can gift  
one person  
**FREE** access  
to the course!

*(Includes course access only;  
bonus materials not included.)*

**Must enroll by March 31 at 11:59 pm ET)**

CHOOSE A  
**FREE**  
EMPOWER  
2000  
Course!

Must enroll by March 31 at 11:59 pm ET)

**FAST ACTION**

**BONUS**



**Spiritual Growth**



**Relationships**



**Purpose & Destiny**



**Money, Work & Business**

# WHY LEARN FROM DR. JAMES GOLL?

For over 50 years, Dr. James Goll has been equipping believers worldwide to walk in *INTIMACY WITH GOD, PROPHETIC REVELATION, and KINGDOM IMPACT.*

Through God Encounters Ministries, he has helped thousands grow in their ability to hear God's voice, discern in the Spirit, and step into their

*God-given purpose.*

## JAMES' TEACHING IS KNOWN FOR BEING:



### **BIBLICALLY GROUNDED**

Deeply rooted in Scripture and sound theology



### **PROPHETICALLY INSIGHTFUL**

Unlocking revelation and spiritual discernment



### **EXPERIENTIAL & TRANSFORMATIONAL**

Bringing truth to life through encounters with God



### **ACTIVATION-FOCUSED**

Equipping you to hear God and move in your purpose

# Your Course Experience Includes



## 12 Spirit-Led Lessons

Discerning God's Voice in an Emotional World



## On-Demand Course Library

Lifetime access to teachings and Q&As—  
so you can revisit and go deeper anytime



## Prophetic Study Guides & Transcripts

Companions designed to help you process, apply,  
and walk in what God is revealing



## 3 LIVE Q&A Sessions with James

Interactive teaching with deep Biblical insight,  
prophetic clarity, and real-time impartation

*Everything is designed to move you from revelation... into transformation.*



# EXPLORING THE *Feeler's Realm*

## How This Current Course Works

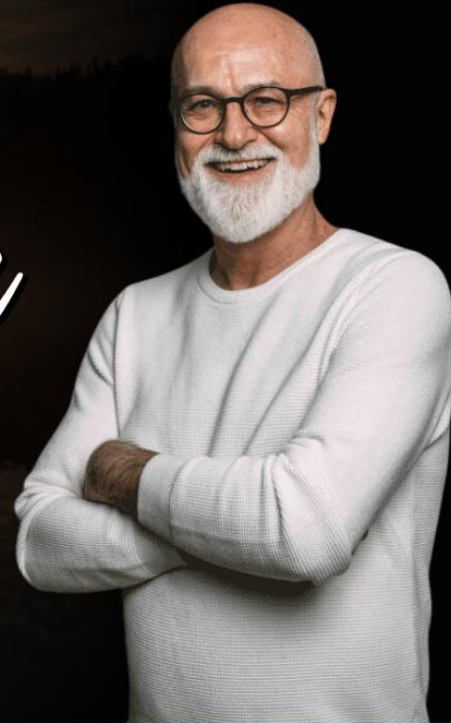
- There are 12 main lessons in the class, plus 3 LIVE Q&A sessions.
- The Q&AS take place on Wed, April 15, April 21 and May 5 all at 4 pm ET
- If you miss a LIVE session (or all of them for that matter), it is okay because you will **have lifetime access** to replays for each session on our private member site.



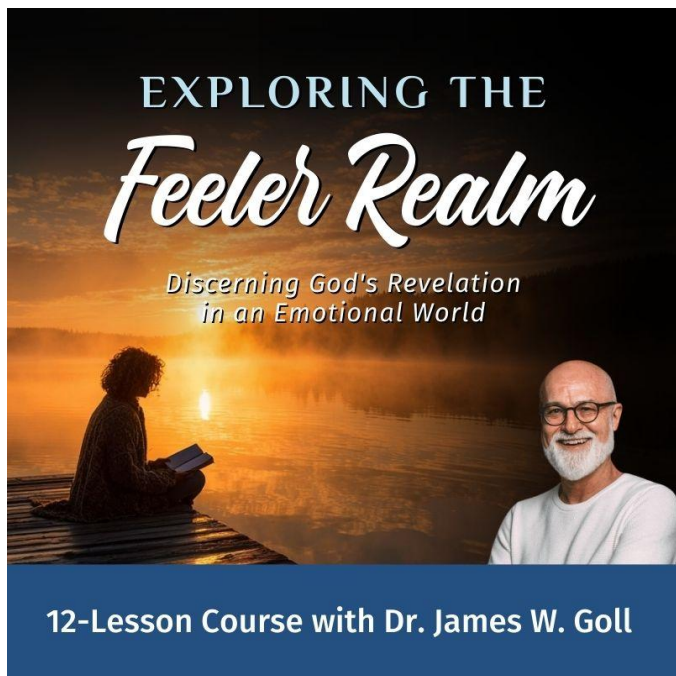
EXPLORING THE

# *Feeler's Realm*

*Discerning God's Revelation  
in an Emotional World*



**Register Now:** [empower2000.com/feeler](https://empower2000.com/feeler)



## Q&A

1. What **ONE** thing stood out the most for you from today's message?
2. What **ONE** action step are you going to take as a result of today's message?
3. What question do you have for James?

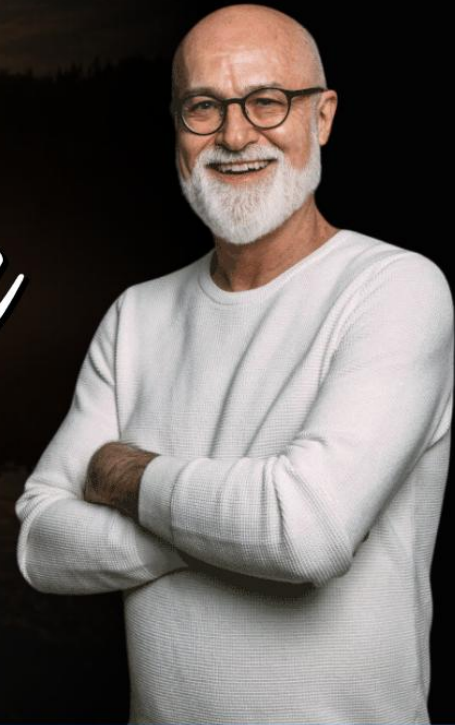
Register Now: [empower2000.com/feeler](https://empower2000.com/feeler)



EXPLORING THE

# *Feeler's Realm*

*Discerning God's Revelation  
in an Emotional World*



**Register Now:** [empower2000.com/feeler](https://empower2000.com/feeler)